



PORT of  
vancouver

# For Lease

9815 Robson Road  
Surrey, BC



## Industrial land for lease

- ± 6 acres close to Fraser Surrey Docks
- Can be subdivided to accommodate multiple tenancies
- Optimal use for truck/trailer parking
- Available for lease on flexible terms



**Nitin Agarwal**

Senior Real Estate Specialist  
nitin.agarwal@portvancouver.com  
P: 604.252.9471

Vancouver Fraser Port Authority  
100 The Pointe, 999 Canada Place  
Vancouver, BC Canada V6C 3T4  
portvancouver.com

## Location

The site is strategically located within Surrey's South Westminster neighborhood, within close proximity to Fraser Surrey Docks. The Property's location provides for easy access to the South Fraser Perimeter Road (SFPR), DP World Fraser Surrey Terminal and direct links to New Westminster and Vancouver via the Pattullo Bridge and New Westminster Rail Bridge.

## Property description

9815 Robson Road, Surrey, BC  
(PID: 000-725-234)

## Site size

± 6 acres (255,966 sf)

## Site condition

The site is generally paved, serviced and fenced. The site will be leased on as is basis. Interested parties are required to satisfy themselves as to the suitability of the site for their purpose

## Use

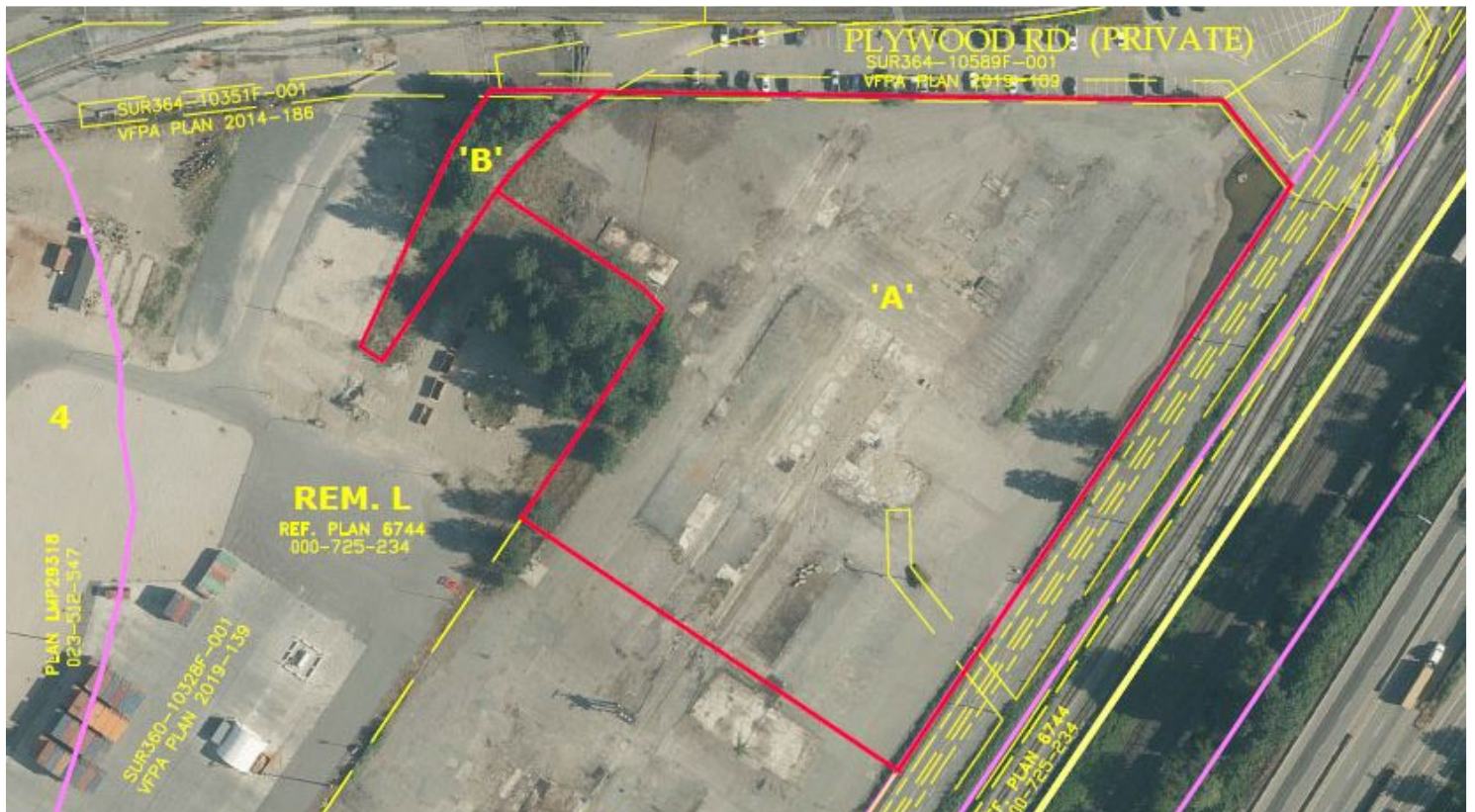
The optimal use of the site is truck/trailer parking

## Lease rate

Please enquire listing agent for details

## Availability

Immediately (for lease up to 3 years)



## Nitin Agarwal

Senior Real Estate Specialist  
nitin.agarwal@portvancouver.com  
P: 604.252.9471

Vancouver Fraser Port Authority  
100 The Pointe, 999 Canada Place  
Vancouver, BC Canada V6C 3T4  
portvancouver.com