

5447500

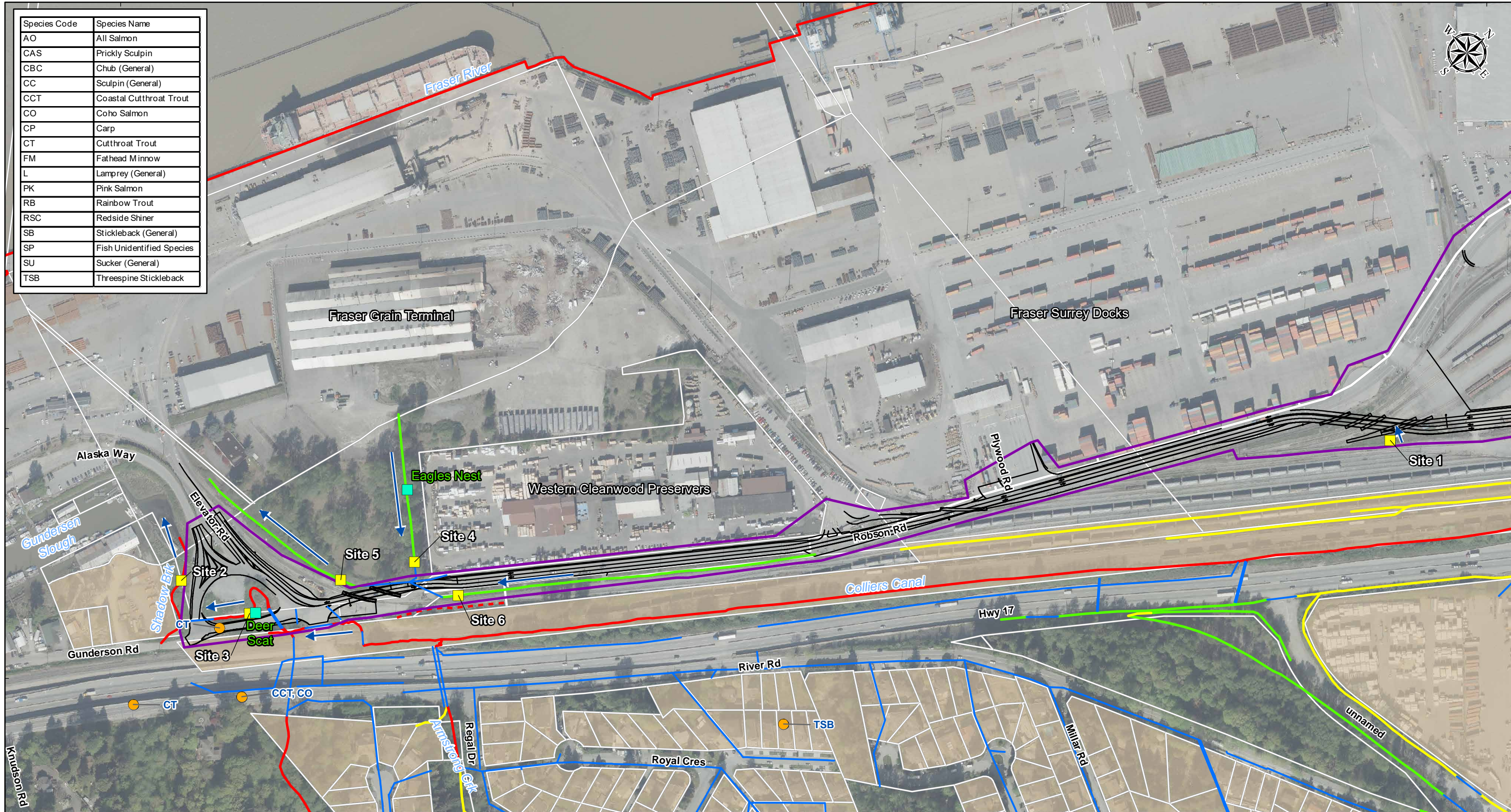
506000

5448000

506500

5448500

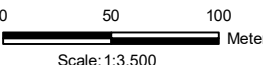
Species Code	Species Name
AO	All Salmon
CAS	Prickly Sculpin
CBC	Chub (General)
CC	Sculpin (General)
CCT	Coastal Cutthroat Trout
CO	Coho Salmon
CP	Carp
CT	Cutthroat Trout
FM	Fathead Minnow
L	Lamprey (General)
PK	Pink Salmon
RB	Rainbow Trout
RSC	Redside Shiner
SB	Stickleback (General)
SP	Fish Unidentified Species
SU	Sucker (General)
TSB	Threespine Stickleback



- Legend**
- FISS Point
 - Aquatic Site
 - Wildlife Location
 - Flow Direction
 - Drainage Main
 - Parcel
 - Private Lands
 - Project Design Linework
 - Study Area

Watercourse (Fish Classification) - City of Surrey

- A
- AO
- B
- C
- Unknown



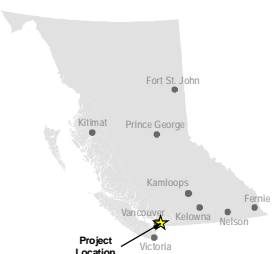
Notes: Fish Classification

Class A: Inhabited by fish year-round or potentially inhabited by fish year round. Considered 'streams' as defined by the Provincial Water Sustainability Act and Riparian Areas Protection Regulation. Considered fish habitat as defined by the Federal Fisheries Act

Class B: Provides food/nutrient value to downstream fish habitat. No fish potential present at any time of the year. Considered a 'stream' as defined by the Provincial Water Sustainability Act and Riparian Areas Protection Regulation. Considered fish habitat by the defined by the Federal Fisheries Act

Class C: A water feature that is not considered a 'stream' as defined by the Provincial Water Sustainability Act and Riparian Areas Protection Regulation. Not considered fish habitat as defined by the Federal Fisheries Act. No fish potential present at any time of the year.

References:
 Data BC - BC Catalogue
 Open Government License
 (http://www.data.gov.bc.ca/)
 NRCAN Geogratis
 Open Government License
 (http://geogratis.gc.ca/)



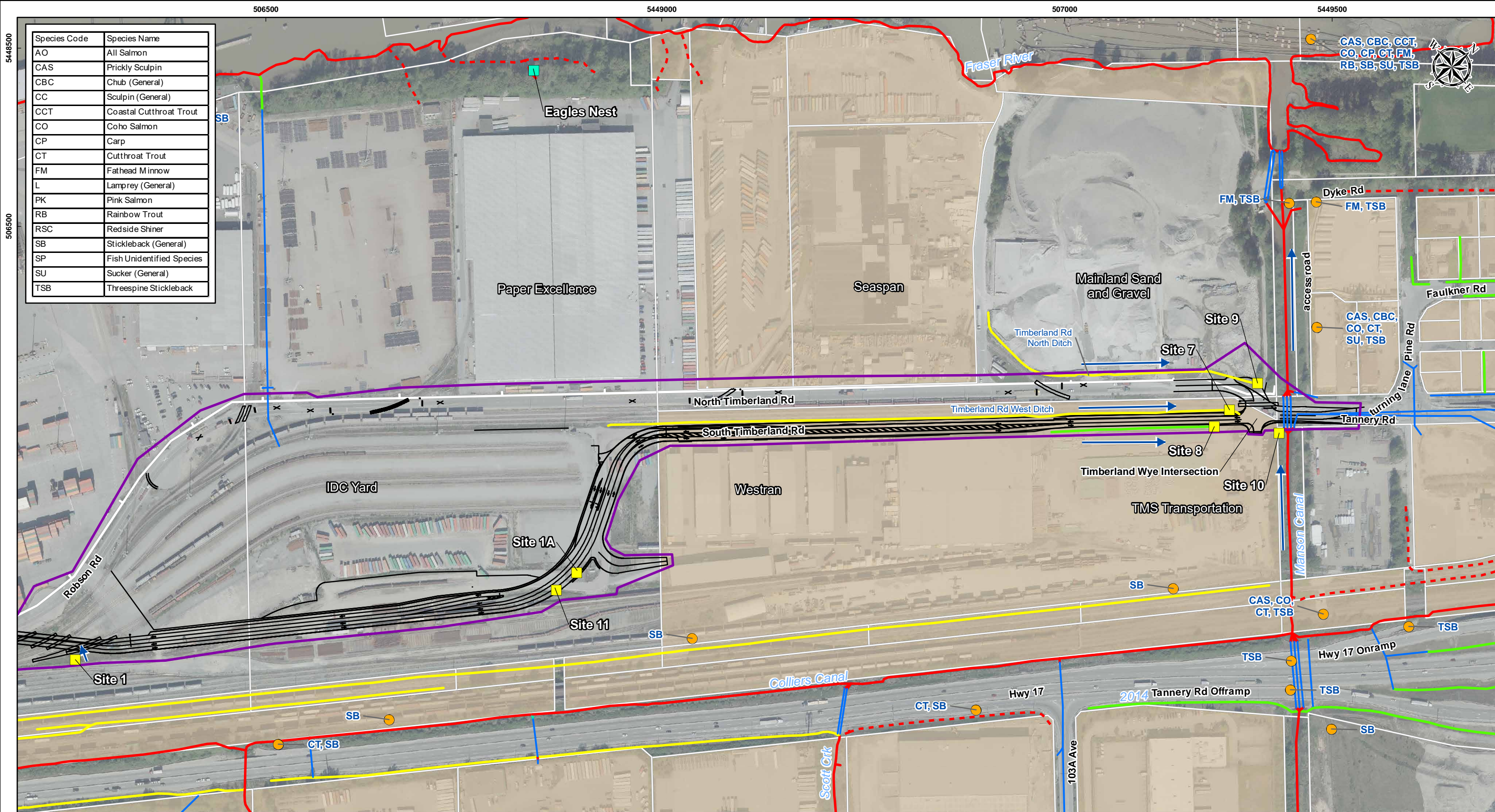
PROJECT:
 Fraser Surrey Port Lands - Transportation Improvements
 Preliminary Design Services

TITLE:
**Project Location and
 Assessment Area**

CLIENT:
 PORT of vancouver Vancouver Fraser Port Authority

DATE: May 14, 2021
 ANALYST: MY
 REVIEWED: RS
Figure 1A

GIS FILE:
 02-01-001_Assessment_Area_v2.mxd
 PROJECT NO:
 20M-00758-00
 COORDINATE SYSTEM:
 NAD 1983 UTM Zone 10N



Species Code	Species Name
AO	All Salmon
CAS	Prickly Sculpin
CBC	Chub (General)
CC	Sculpin (General)
CCT	Coastal Cutthroat Trout
CO	Coho Salmon
CP	Carp
CT	Cutthroat Trout
FM	Fathead Minnow
L	Lamprey (General)
PK	Pink Salmon
RB	Rainbow Trout
RSC	Redside Shiner
SB	Stickleback (General)
SP	Fish Unidentified Species
SU	Sucker (General)
TSB	Threespine Stickleback

- Legend**
- FISS Point
 - Aquatic Site
 - Wildlife Location
 - Flow Direction
 - Drainage Main
 - ▭ Parcel
 - ▭ Private Lands
 - Project Design Linework
 - ▭ Study Area

Watercourse (Fish Classification) - City of Surrey

- A
- - - AO
- B
- C
- Unknown

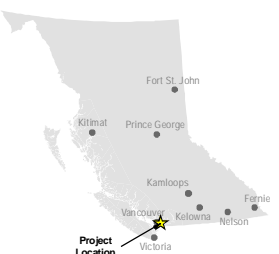
Notes: Fish Classification

Class A: Inhabited by fish year-round or potentially inhabited by fish year round. Considered 'streams' as defined by the Provincial Water Sustainability Act and Riparian Areas Protection Regulation. Considered fish habitat as defined by the Federal Fisheries Act

Class B: Provides food/nutrient value to downstream fish habitat. No fish potential present at any time of the year. Considered a 'stream' as defined by the Provincial Water Sustainability Act and Riparian Areas Protection Regulation. Considered fish habitat by the defined by the Federal Fisheries Act

Class C: A water feature that is not considered a 'stream' as defined by the Provincial Water Sustainability Act and Riparian Areas Protection Regulation. Not considered fish habitat as defined by the Federal Fisheries Act. No fish potential present at any time of the year.

References:
 Data BC - BC Catalogue
 Open Government License
<http://www.data.gov.bc.ca/>
 NRCAN Geogratis
 Open Government License
<http://geogratis.gc.ca/>



PROJECT:
 Fraser Surrey Port Lands - Transportation Improvements
 Preliminary Design Services

TITLE:
 Project Location and Assessment Area

CLIENT:
 PORT of vancouver Vancouver Fraser Port Authority

DATE: May 14, 2021

ANALYST: MY

REVIEWED: RS

Figure 1B

GIS FILE:
 02-01-001_Assessment_Area_v2.mxd

PROJECT NO:
 20M-00758-00

COORDINATE SYSTEM:
 NAD 1983 UTM Zone 10N

