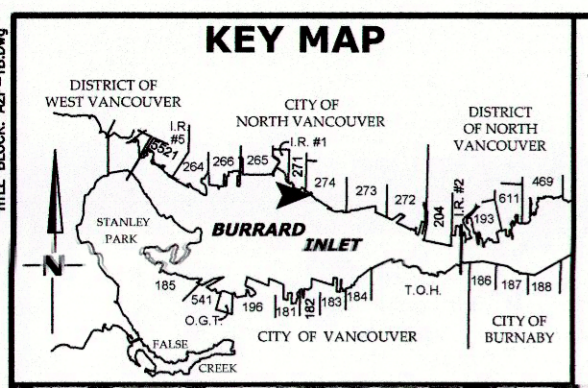


TITLE BLOCK: 2016-164.dwg



PARCEL AREAS

PCL. 'A' (LAND)	= 1,344m ² (14,467ft ²)
PCL. 'B' (LAND)	= 6,264m ² (67,425ft ²)
PCL. 'C' (WATER)	= 61,981m ² (667,158ft ²)
PCL. 'D' (LAND)	= 2,897m ² (31,183ft ²)
PCL. 'E' (LAND ACCESS)	= 411m ² (4,424ft ²)
TOTAL AREA	= 72,897m²

REFERENCES: - CNV066-04266F & VFPA PLAN 2015-104

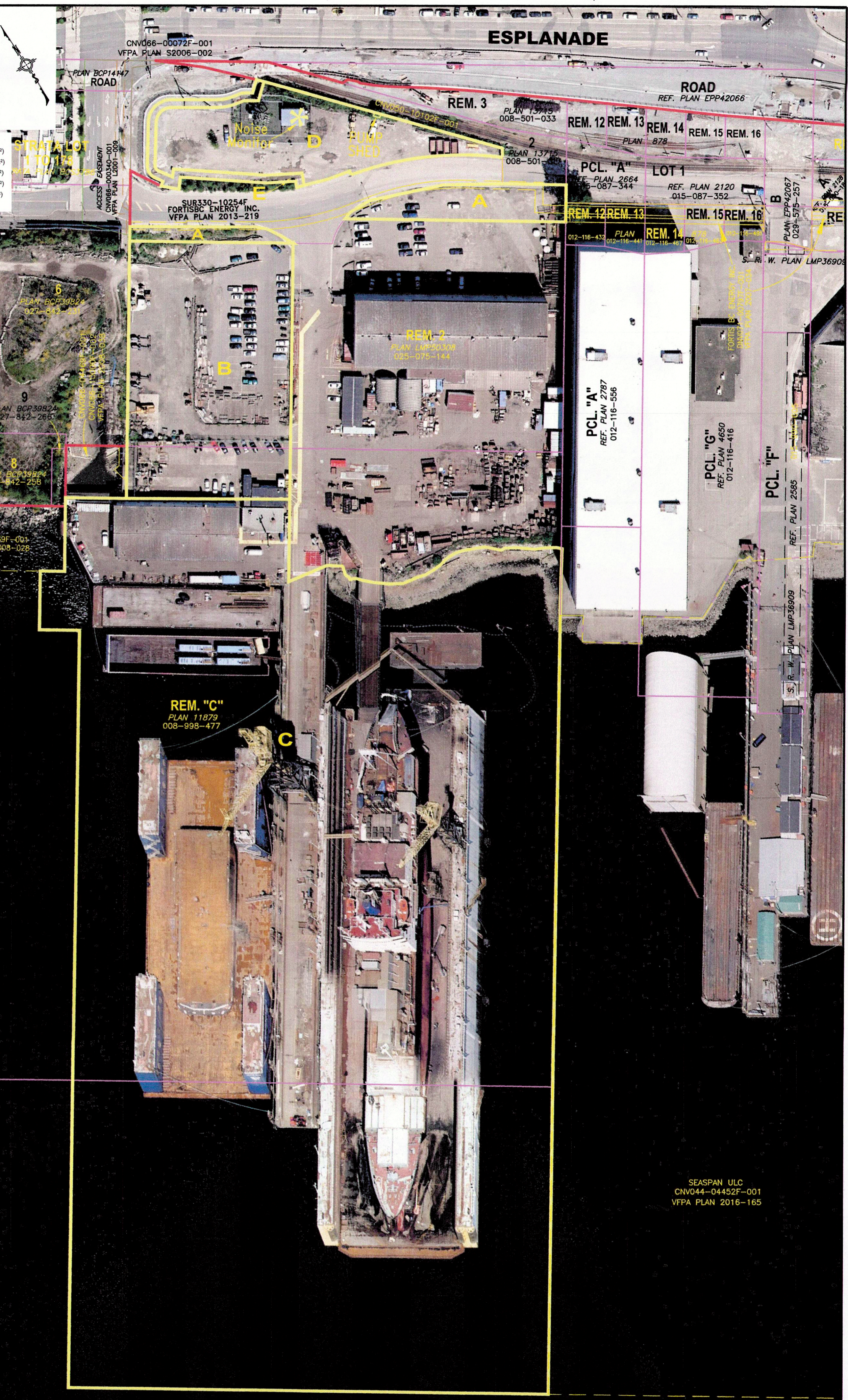
NOTES:

- DISTANCES ARE SHOWN IN INTERNATIONAL METRES AND DECIMALS THEREOF.
- BEARINGS ARE U.T.M., AND ARE DERIVED FROM VFPA CONTROL SURVEY.
- PRIOR TO COMPUTATION OF U.T.M. CO-ORDINATES, MULTIPLY DISTANCES BY COMBINED SCALE FACTOR 0.99996024.
- FINAL DIMENSIONS AND CO-ORDINATES ARE SUBJECT TO SURVEY.

CERTIFIED CORRECT
on the 28th day of September 2016

Satnam Singh Senghara

SATNAM SINGH SENGERA
Senior Engineering Survey Technician



SEASpan ULC
CNV044-04452F-001
VFPA PLAN 2016-165

BURRARD INLET

Ref.No.	REFERENCE	No.	Date	REVISION	Dr'n	Ch'd	DESIGN BY SSS	DRAWN BY SSS	APPROVED	DATE 28-SEPTEMBER-2016	SCALE 1:1000	SIZE A2	DWG. AZ	VANCOUVER FRASER PORT AUTHORITY ENGINEERING DEPARTMENT	VANCOUVER DRYDOCK COMPANY LIMITED PARTNERSHIP LEASE AREAS OVER PART OF AND FRONTING LOT 2 PLAN LMP50308 & LOT C PLAN 11879 EXCEPT: PART SUBDIVIDED BY PLAN LMP50309 AND LMP50310 ALL OF THAT PORTION OF THE BED AND FORESHORE OF BURRARD INLET LYING IN FRONT OF BLOCKS 175 & 176 D. L. 274 GP. 1 N. W. D. CITY OF NORTH VANCOUVER	LEASE PLAN No. 2016-164	SHEET 1 of 1	REV.
---------	-----------	-----	------	----------	------	------	------------------	-----------------	----------	---------------------------	-----------------	------------	------------	---	---	-------------------------	-----------------	------