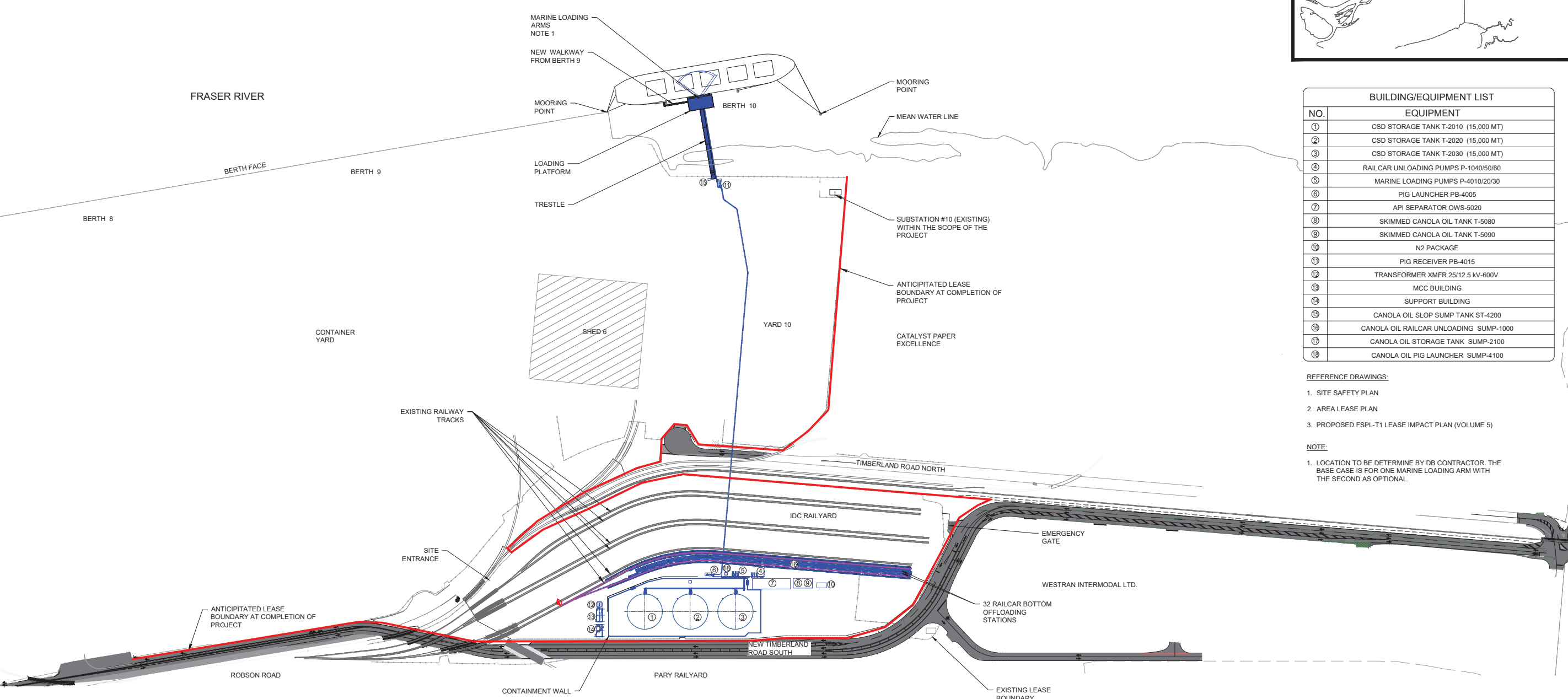
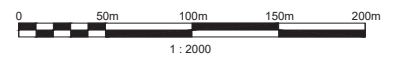


BUILDING/EQUIPMENT LIST	
NO.	EQUIPMENT
①	CSD STORAGE TANK T-2010 (15,000 MT)
②	CSD STORAGE TANK T-2020 (15,000 MT)
③	CSD STORAGE TANK T-2030 (15,000 MT)
④	RAILCAR UNLOADING PUMPS P-1040/50/60
⑤	MARINE LOADING PUMPS P-4010/20/30
⑥	PIG LAUNCHER PB-4005
⑦	API SEPARATOR OWS-5020
⑧	SKIMMED CANOLA OIL TANK T-5080
⑨	SKIMMED CANOLA OIL TANK T-5090
⑩	N2 PACKAGE
⑪	PIG RECEIVER PB-4015
⑫	TRANSFORMER XMFR 25/12.5 KV-600V
⑬	MCC BUILDING
⑭	SUPPORT BUILDING
⑮	CANOLA OIL SLOP SUMP TANK ST-4200
⑯	CANOLA OIL RAILCAR UNLOADING SUMP-1000
⑰	CANOLA OIL STORAGE TANK SUMP-2100
⑱	CANOLA OIL PIG LAUNCHER SUMP-4100

- REFERENCE DRAWINGS:
- SITE SAFETY PLAN
 - AREA LEASE PLAN
 - PROPOSED FSPL-T1 LEASE IMPACT PLAN (VOLUME 5)
- NOTE:
- LOCATION TO BE DETERMINE BY DB CONTRACTOR. THE BASE CASE IS FOR ONE MARINE LOADING ARM WITH THE SECOND AS OPTIONAL.



SITE PLAN
SCALE: 1:2000



PERMIT TO PRACTICE
SACRE-DAVEY ENGINEERING INC.
 1003256
 Engineers and Geoscientists
 British Columbia

DEFINITION DRAWING ISSUED FOR TENDER NOT FOR CONSTRUCTION

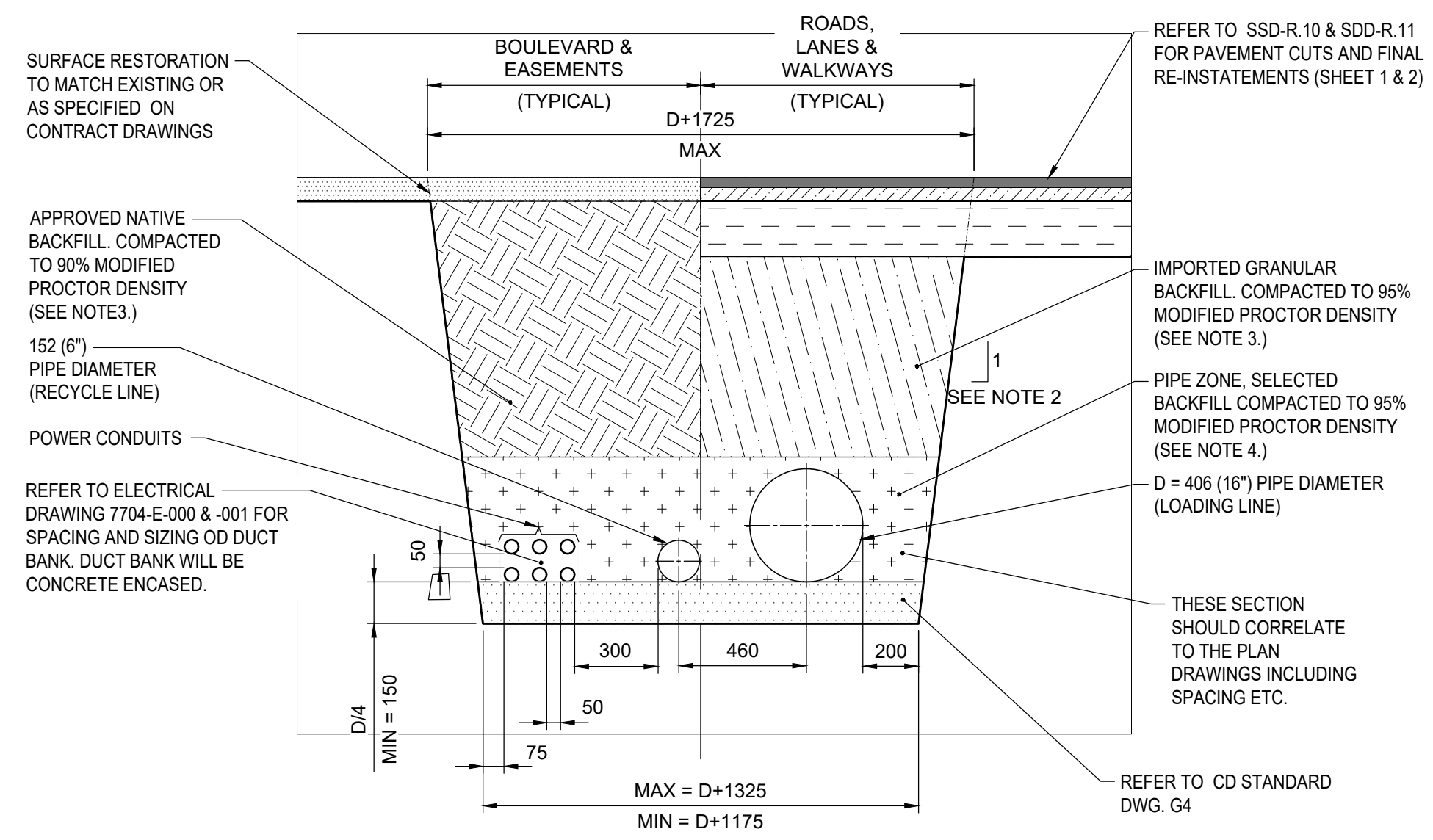
No.	DATE	DESCRIPTION	DRAWN	CHK'D	DESIGN	CHK'D	APP'D	No.	DATE	DESCRIPTION	DRAWN	CHK'D	DESIGN	CHK'D	APP'D
								J	AUG25/22	ISSUED FOR TENDER	SN				DP
								H	JUL06/22	RE-ISSUED FOR PERMIT	TM				DP
								G	JUN30/22	ISSUED FOR PERMIT	TM				DP
								F	APR26/22	ISSUED FOR CLIENT REVIEW	TM				DP
								E	MAR17/22	ISSUED FOR CLIENT REVIEW	RC				DP
								D	MAR14/22	ISSUED FOR CLIENT REVIEW	RC				DP
								M	DEC09/22	RE-ISSUED FOR TENDER	RC	KE	KE	MA	DP
								L	OCT24/22	ISSUED FOR APPROVAL	FP				DP
								K	SEP29/22	ISSUED FOR APPROVAL	SN			KE	DP



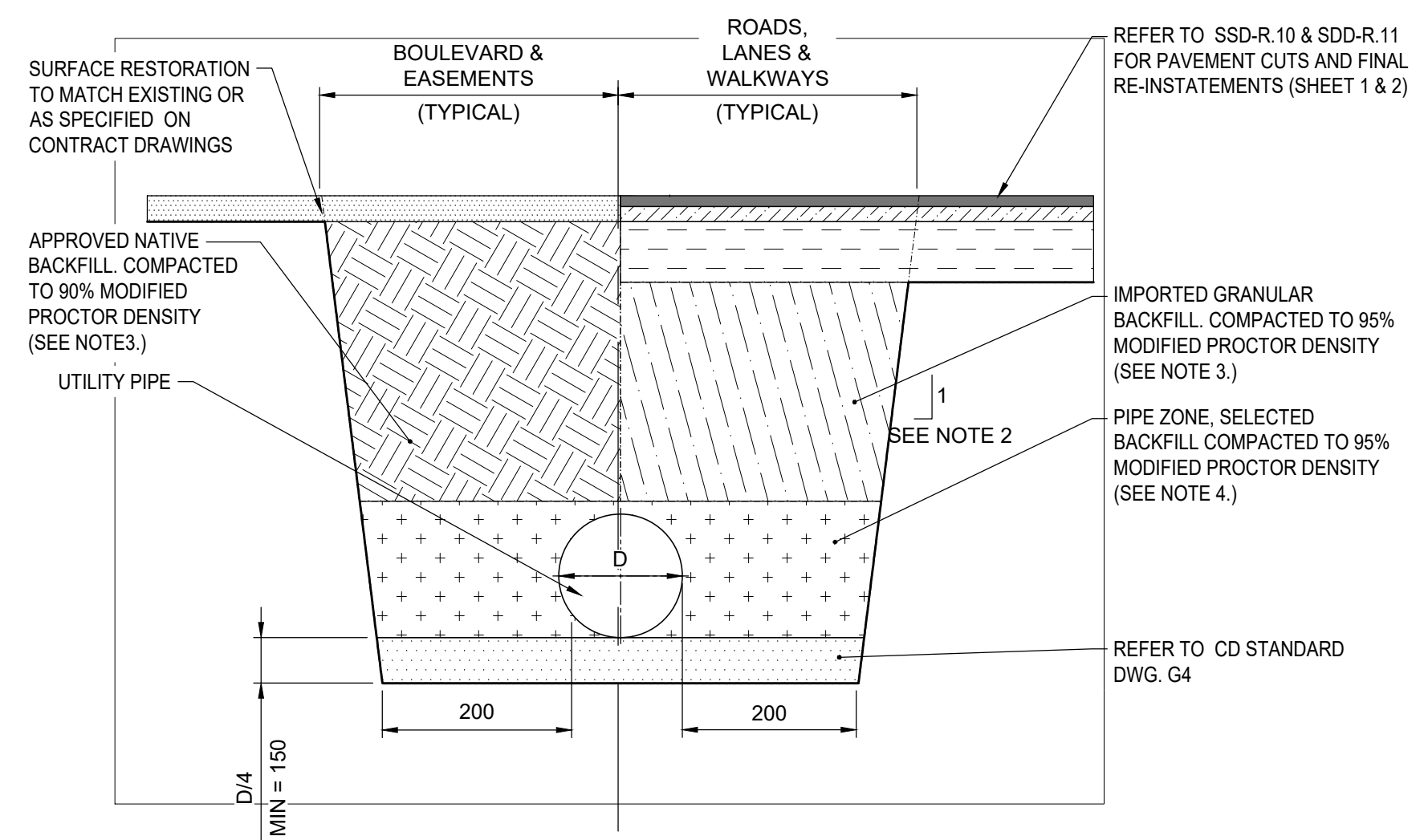
CONSULTANT			
TITLE			
CANOLA OIL TRANSLOAD FACILITY GENERAL ARRANGEMENT			
DRAWING SCALE	PROJECT NUMBER	DRAWING NUMBER	REV.
1:2000	7704	7704-GA-001	M

File name: Z:\Jobs\A To H\DP World Canada\7819 Canola Export OE Ph 1\9 Drawings\5 CAD\5 Mech\7704-GA-001.dwg - 001
 Last Saved: Dec. 06/22 2:05pm Plotted: Dec. 7/22

- NOTES
- 1) ALL DIMENSIONS ARE IN MILLIMETERS UNLESS NOTED OTHERWISE.
 - 2) TEMPORARY EXCAVATION SIDE SLOPES SHALL BE IN ACCORDANCE WITH OCCUPATIONAL HEALTH & SAFETY REGULATIONS OF BRITISH COLUMBIA AND PER RECOMMENDATION FROM SITE GEOTECHNICAL ENGINEER.
 - 3) BACKFILL MATERIAL AND PLACEMENT SHALL BE IN ACCORDANCE WITH THE GEOTECHNICAL REPORT UNLESS NOTED OTHERWISE AND SHALL BE APPROVED BY THE FIELD ENGINEER.
 - 4) MATERIAL FOR PIPE SURROUND ZONE SHALL BE FREE FROM LARGE SHARP ROCKS AND GRAVEL TO PREVENT DAMAGE TO THE PIPE COATING.
 - 5) NO OVER-EXCAVATION SHALL BE COMMENCED WITHOUT PRIOR APPROVAL BY THE FIELD ENGINEER OR GEOTECHNICAL ENGINEER.



UTILITY TRENCH DETAIL



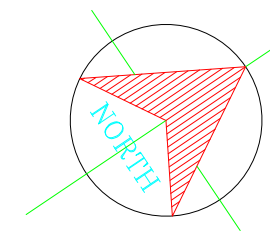
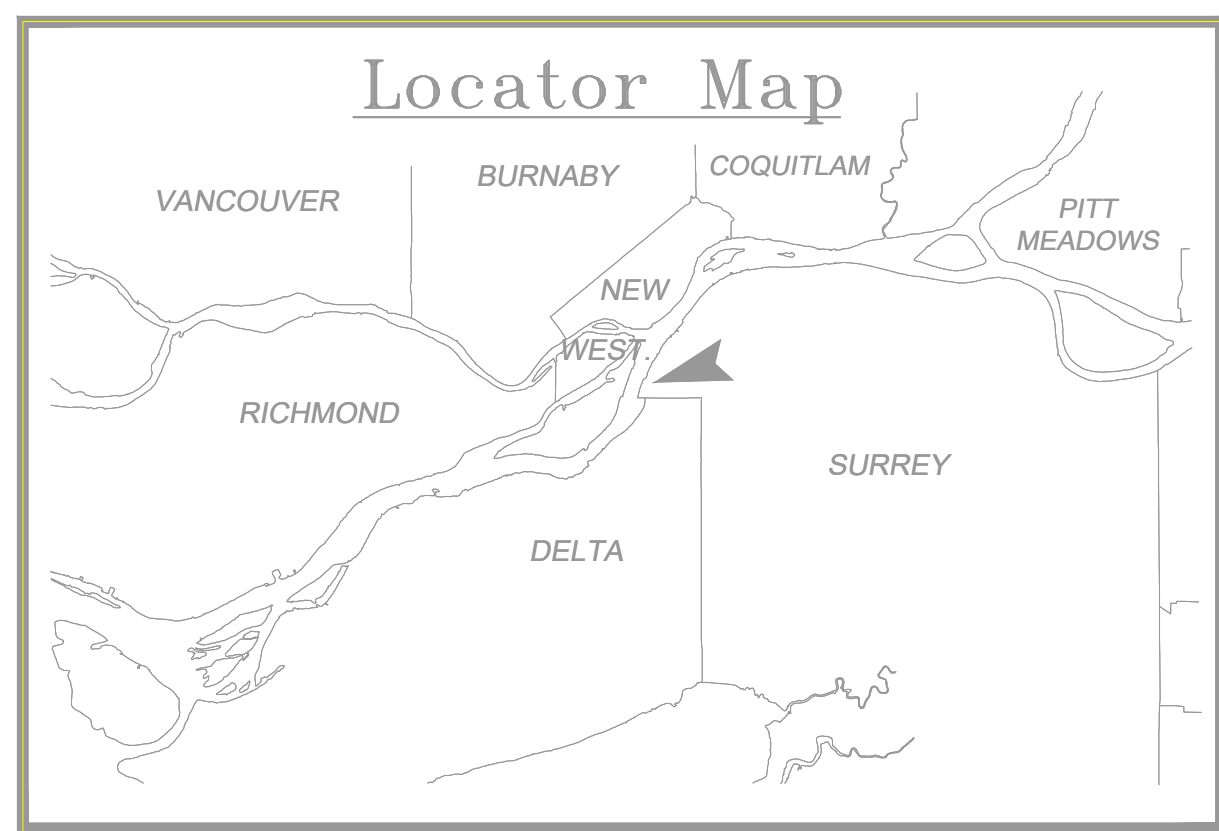
TYPICAL TRENCH DETAIL (MISCELLANEOUS SERVICES)

INDICATIVE DRAWING
ISSUED FOR TENDER

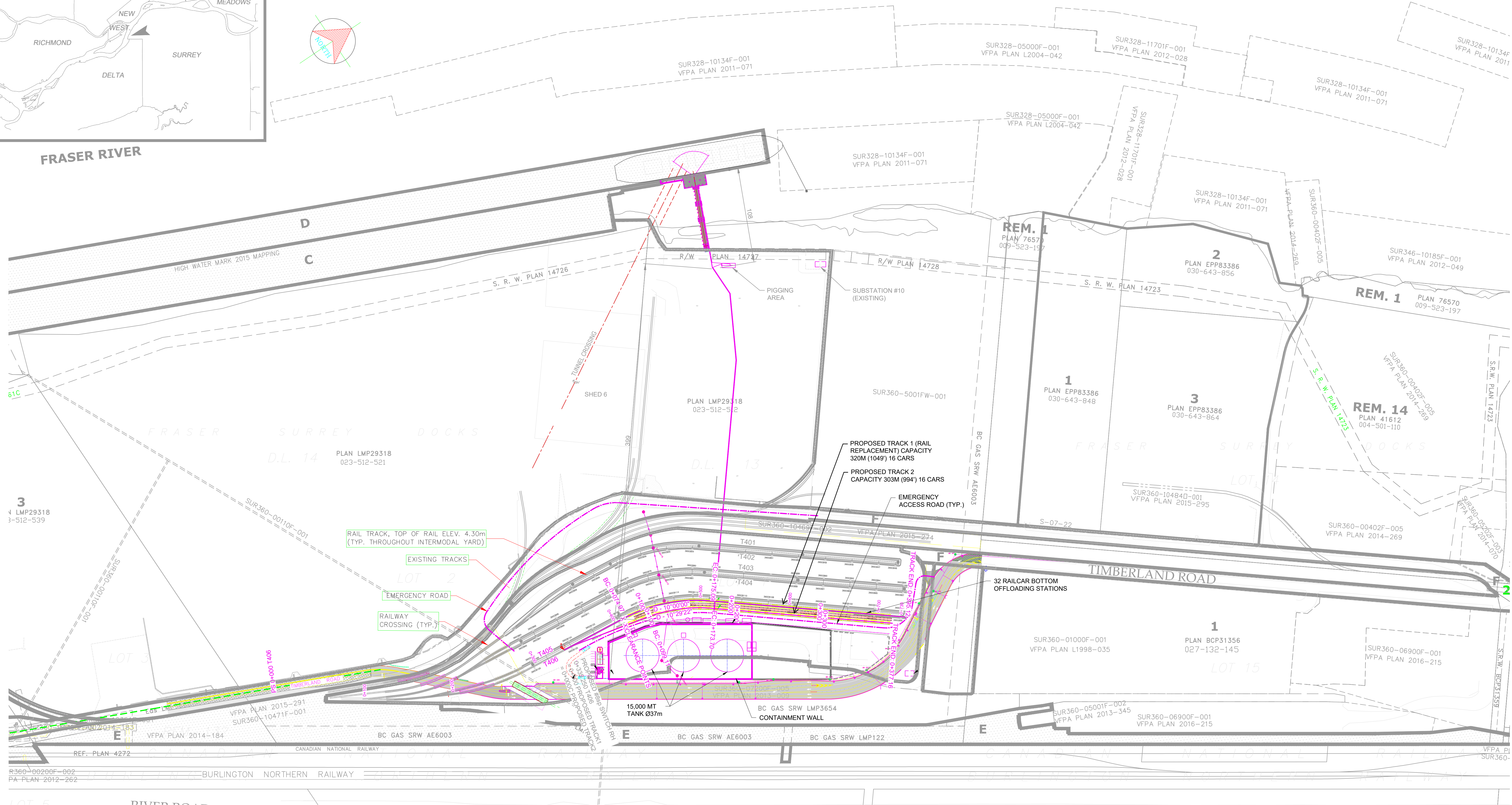
File name: Z:\Jobs\A & T\1\DP World Canada\7919_Canola Export OE Ph 1\9 Drawings\5 CAD\3 Civil\7704-C-125.dwg - Layout
Last Saved: Dec. 08/22 9:06am Plotted: Dec. 8/22

PROFESSIONAL SEAL															
No.	DATE	DESCRIPTION	DRAWN	CHK'D	DESIGN	CHK'D	APP'D	No.	DATE	DESCRIPTION	DRAWN	CHK'D	DESIGN	CHK'D	APP'D
								B	DEC09/22	ISSUED FOR TENDER	BS	KS	KS	KS	MA
								A	NOV01/22	ISSUED FOR APPROVAL	RC		KS		
ISSUE / REVISIONS															

CONSULTANT			
TITLE			
CANOLA OIL TRANSLOAD GENERAL SECTIONS			
DRAWING SCALE	PROJECT NUMBER	DRAWING NUMBER	REV.
NOTED	7704	7704-C-125	B



FRASER RIVER



RAIL TRACK, TOP OF RAIL ELEV. 4.30m (TYP. THROUGHOUT INTERMODAL YARD)

EXISTING TRACKS

EMERGENCY ROAD

RAILWAY CROSSING (TYP.)

PROPOSED TRACK 1 (RAIL REPLACEMENT) CAPACITY 320M (1049') 16 CARS

PROPOSED TRACK 2 CAPACITY 303M (994') 16 CARS

EMERGENCY ACCESS ROAD (TYP.)

32 RAILCAR BOTTOM OFFLOADING STATIONS

15,000 MT TANK Ø37m

BC GAS SRW LMP3654 CONTAINMENT WALL

LEGEND

	NEW
	EXISTING

CONCEPTUAL - FOR DISCUSSION ONLY

Filename: Z:\Jobs\A To H\DP World Canada\7819\7819-SK-GA-001.dwg - 001
 Last Saved: Sep. 28/22 4:17pm Plotted: Sep. 28/22

No.	DATE	DESCRIPTION	DRAWN	CHK'D	DESIGN	CHK'D	APP'D	No.	DATE	DESCRIPTION	DRAWN	CHK'D	DESIGN	CHK'D	APP'D
		ISSUE / REVISIONS								ISSUE / REVISIONS					
								A	SEP28/22	ISSUED FOR INFORMATION					JZ



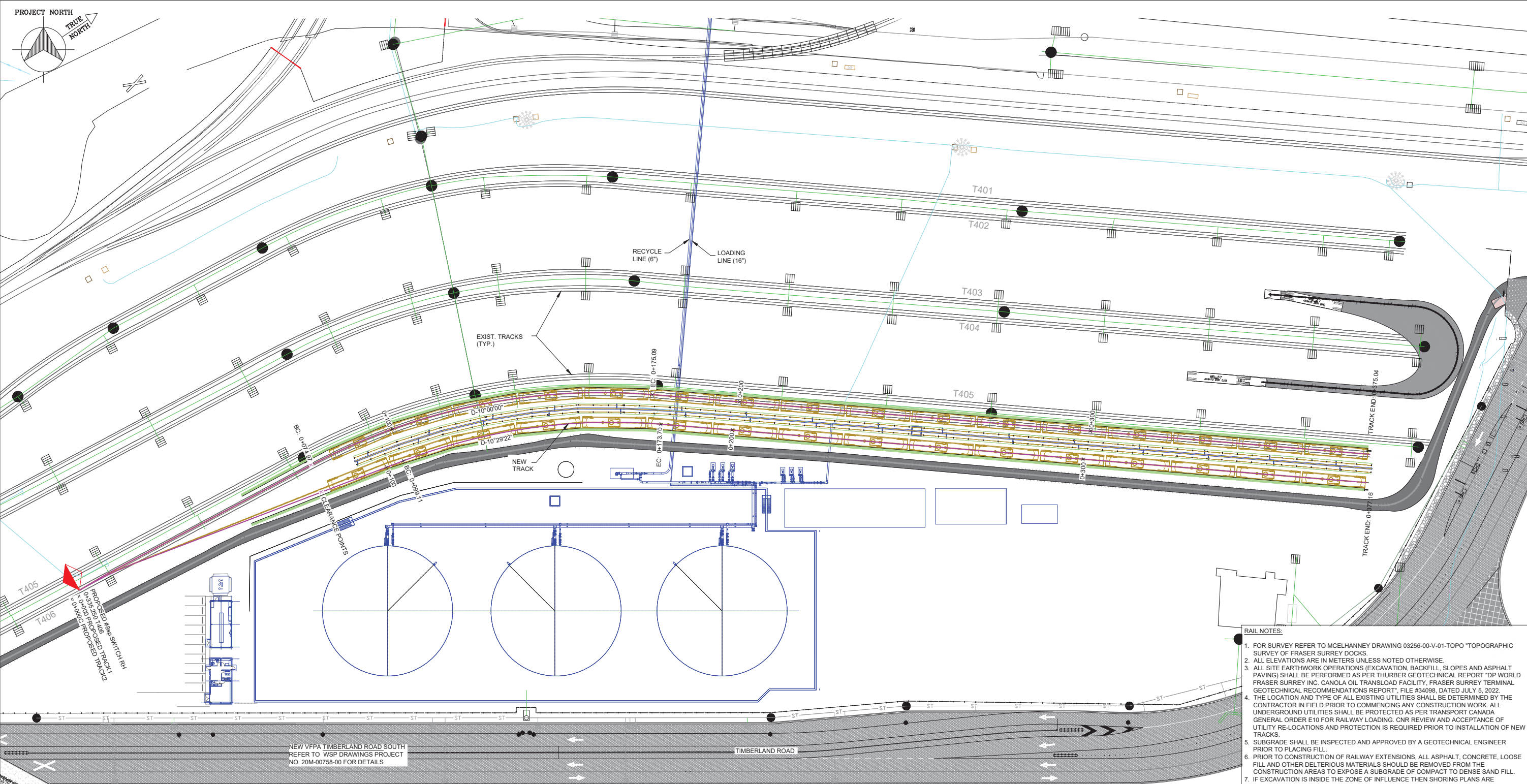
CONSULTANT

TITLE

CANOLA OIL TRANSLOAD FACILITY RAIL PLAN

DRAWING SCALE	PROJECT NUMBER	DRAWING NUMBER	REV.
1:2000	7819	7819-SK-GA-001	A

File: Z:\Jobs\A To H\DP World Canada\7819 Canola Export OE Ph 1\9 Drawings\5 CAD\3 Civil\7704-C-117.dwg - 111
 Last Saved: Dec 08/22 12:56pm Plot: Dec 13/22



- RAIL NOTES:**
- FOR SURVEY REFER TO MCELHANNY DRAWING 03256-00-V-01-TOPO 'TOPOGRAPHIC SURVEY OF FRASER SURREY DOCKS.
 - ALL ELEVATIONS ARE IN METERS UNLESS NOTED OTHERWISE.
 - ALL SITE EARTHWORK OPERATIONS (EXCAVATION, BACKFILL, SLOPES AND ASPHALT PAVING) SHALL BE PERFORMED AS PER THURBER GEOTECHNICAL REPORT 'DP WORLD FRASER SURREY INC. CANOLA OIL TRANSLOAD FACILITY, FRASER SURREY TERMINAL GEOTECHNICAL RECOMMENDATIONS REPORT', FILE #34098, DATED JULY 5, 2022.
 - THE LOCATION AND TYPE OF ALL EXISTING UTILITIES SHALL BE DETERMINED BY THE CONTRACTOR IN FIELD PRIOR TO COMMENCING ANY CONSTRUCTION WORK. ALL UNDERGROUND UTILITIES SHALL BE PROTECTED AS PER TRANSPORT CANADA GENERAL ORDER E10 FOR RAILWAY LOADING. CNR REVIEW AND ACCEPTANCE OF UTILITY RE-LOCATIONS AND PROTECTION IS REQUIRED PRIOR TO INSTALLATION OF NEW TRACKS.
 - SUBGRADE SHALL BE INSPECTED AND APPROVED BY A GEOTECHNICAL ENGINEER PRIOR TO PLACING FILL.
 - PRIOR TO CONSTRUCTION OF RAILWAY EXTENSIONS, ALL ASPHALT, CONCRETE, LOOSE FILL AND OTHER DELTERIOUS MATERIALS SHOULD BE REMOVED FROM THE CONSTRUCTION AREAS TO EXPOSE A SUBGRADE OF COMPACT TO DENSE SAND FILL.
 - IF EXCAVATION IS INSIDE THE ZONE OF INFLUENCE THEN SHORING PLANS ARE REQUIRED AND MUST INCLUDE THE LIVE E80 LOADING FROM PASSING TRAINS.
 - MINIMUM PAVEMENT STRUCTURE FOR NEW ON-SITE DRIVE AISLES AND PARKING, 85MM THICK ASPHALTIC CONCRETE, 100MM-19MM MINUS CRUSHED GRAVEL BASE COURSE, 200MM-75MM WELL GRADED CLEAN SAND AND GRAVEL SUB-BASE COURSE. ALL BASE AND SUB-BASE SHOULD BE COMPACTED TO 95% STANDARD PROCTOR MODIFIED DRY DENSITY (SPMDD).
 - BALLAST SHALL CONFORM TO THE FOLLOWING GRADATION. FOR 19MM NOMINAL SIZE, WITH 40-75% PASSING BY WEIGHT, FOR 25MM NOMINAL SIZE, WITH 90-100% PASSING BY WEIGHT, FOR 38MM NOMINAL SIZE WITH 100% PASSING BY WEIGHT.
 - ALL UTILITIES MUST BE 4.6M MINIMUM HORIZONTALLY AWAY FROM ANY EXISTING OF PLANNED RAIL SIGNALS AND FACILITIES.
 - POSITIVE DRAINAGE OF RAILROAD SHALL BE MAINTAINED DURING CONSTRUCTION.
 - BUMPING POST SHALL BE HAYES TYPE WG OF HD AND 3.05M FROM THE TRACK END.
 - RAIL GEMETRY, MATERIALS, TURNOUTS & SWITCH STANDS, TECHNICAL SPECIFICATIONS SHALL BE DESIGNED AND APPROVED BY RAILWAY ENGINEER - PNR.

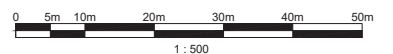
GENERAL NOTE:
1. FOR LAYOUT SEE DRAWING 7704-GA-001.

LEGEND

- EXISTING SANITARY
- PROPOSE SANITARY SEWER
- ⊕ LIFT-PUMP
- ⊙ SANITARY MANHOLE
- ⊕ SANITARY VALVE
- ⊞ CATCH BASIN
- EXISTING WATER
- EXISTING STORM WATER PIPE
- EXISTING ELECTRICAL UNDERGROUND DUCT
- EXISTING COMMUNICATION UNDERGROUND CABLE
- EXISTING DITCH
- EXISTING CULVERT
- PROPOSED MANHOLE
- EXISTING MANHOLE
- CAP

INDICATIVE DRAWING
ISSUED FOR TENDER

PERMIT TO PRACTICE
SACRE DAVEY ENGINEERING INC.
1003258
 Engineers and Geoscientists
 British Columbia

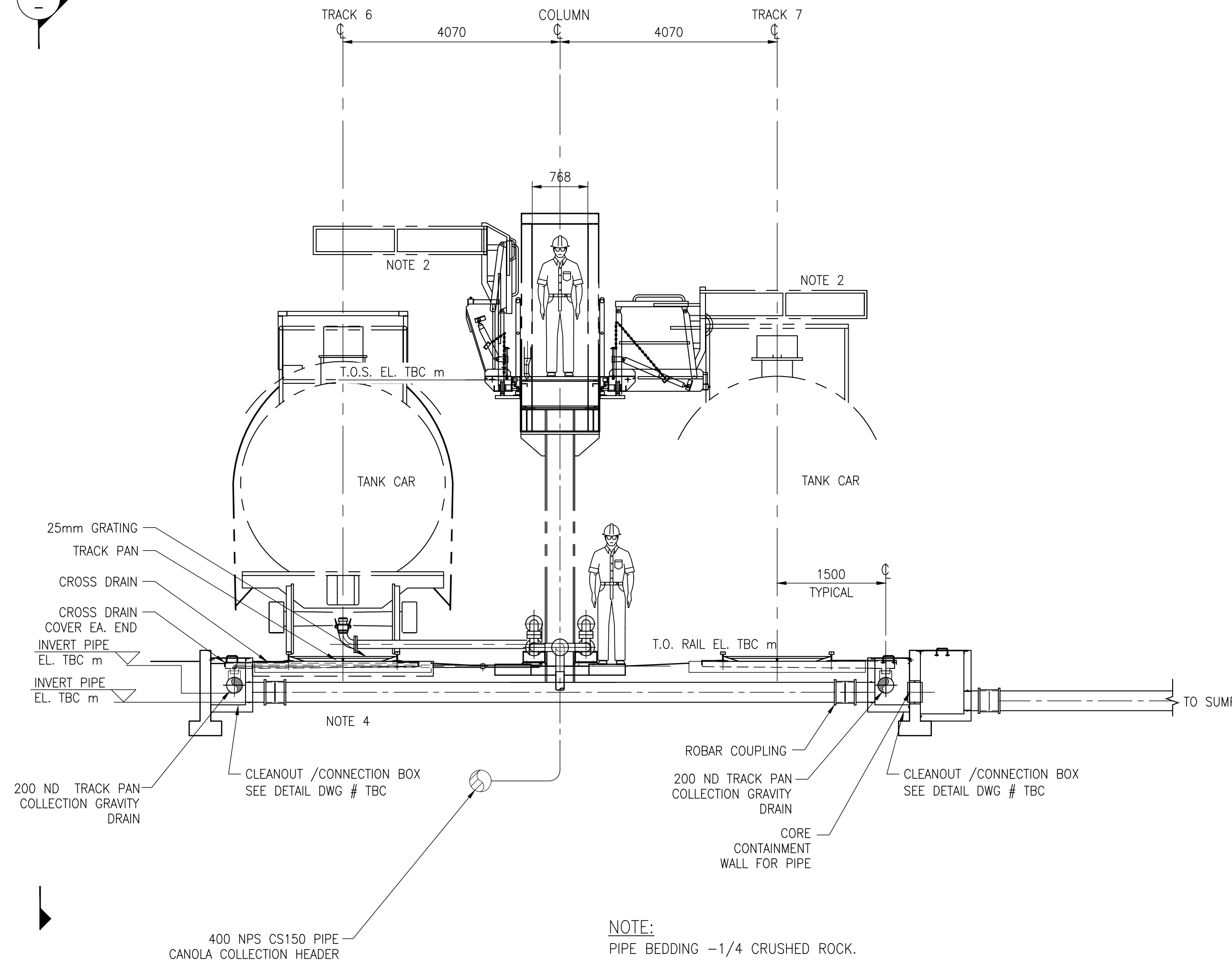
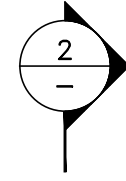


PROFESSIONAL SEAL

No.	DATE	DESCRIPTION	DRAWN	CHK'D	DESIGN	CHK'D	APP'D	No.	DATE	DESCRIPTION	DRAWN	CHK'D	DESIGN	CHK'D	APP'D
								B	DEC14/22	ISSUED FOR TENDER					
								A	NOV01/22	ISSUED FOR APPROVAL					

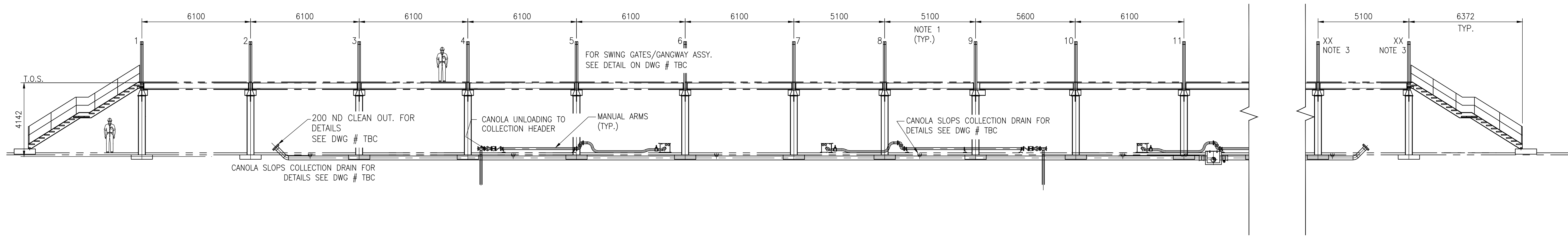


TITLE CANOLA OIL TRANSLOAD NEW RAILYARD	
DRAWING SCALE	PROJECT NUMBER
1:500	7704
DRAWING NUMBER	REV.
7704-C-117	B



SECTION 1
SCALE: NTS

- NOTES:**
1. ALL DIMENSIONS TO BE CONFIRMED AT DETAILED ENGINEERING STAGE.
 2. SLIDING PLATFORM.
 3. PLATFORM SUPPORT QUANTITY TO BE CONFIRMED AT DETAILED ENGINEERING STAGE.
 4. FOR FOUNDATION DETAILS SEE DWG 7704-STR-005, SECTION 2.



SECTION 2
SCALE: 1:125

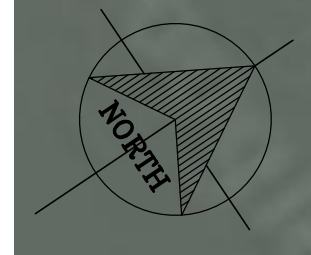
ISSUED FOR APPROVAL

NOT FOR CONSTRUCTION

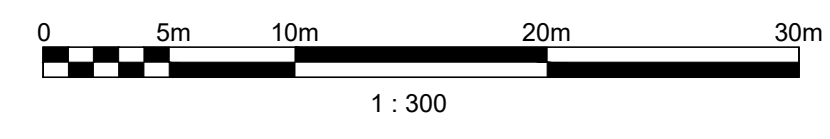
No.	DATE	DESCRIPTION	DRAWN	CHK'D	DESIGN	CHK'D	APP'D	No.	DATE	DESCRIPTION	DRAWN	CHK'D	DESIGN	CHK'D	APP'D
ISSUE / REVISIONS															



CONSULTANT	
TITLE CANOLA OIL TRANSLOAD RAIL UNLOADING SECTIONS	
DRAWING SCALE	DRAWING NUMBER
AS NOTED	7704-M-005
PROJECT NUMBER	REV.
7704	C



ISSUED FOR TENDER
NOT FOR CONSTRUCTION



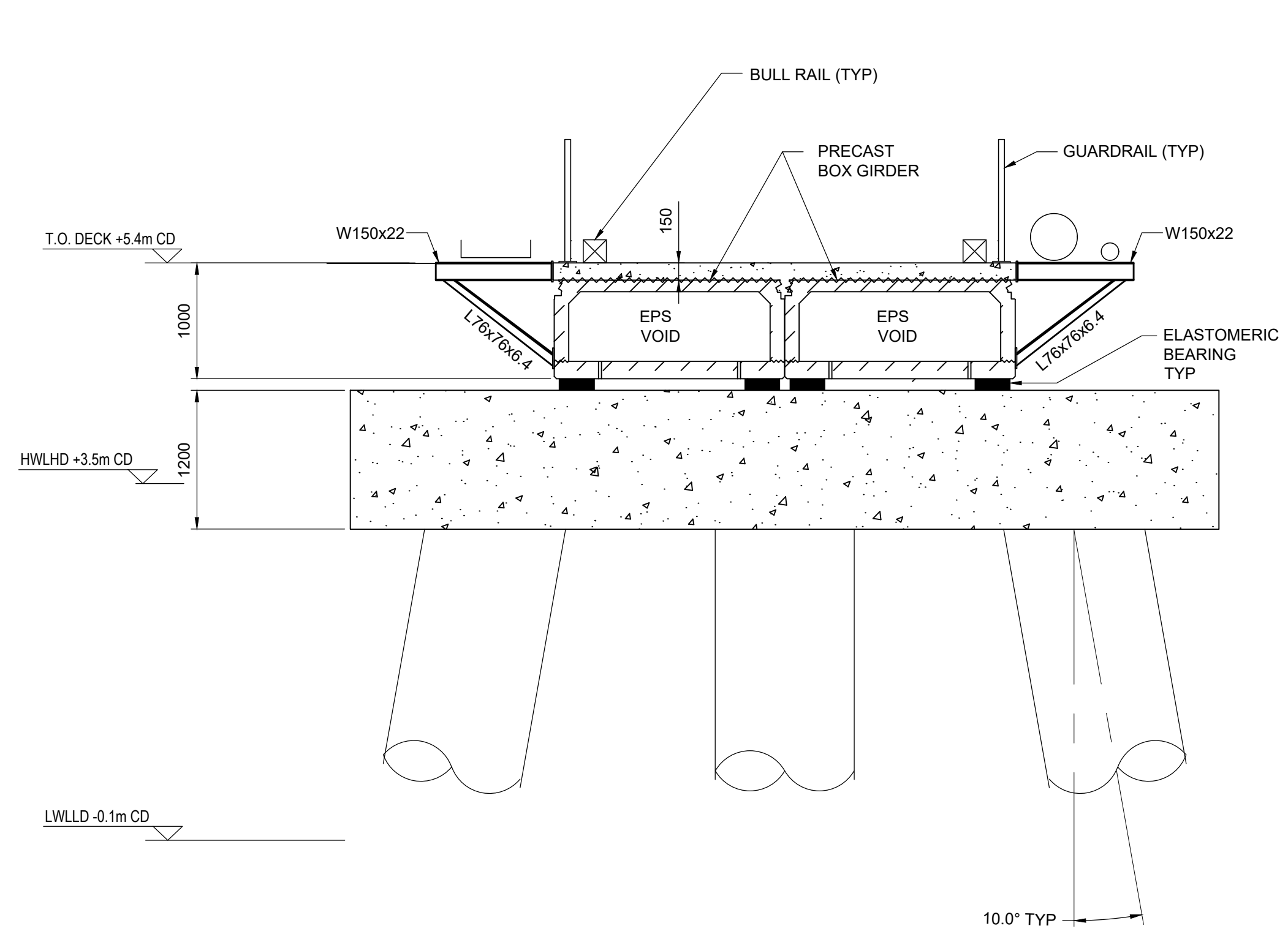
File name: Z:\Jobs\A To H\DP-World_Canada\7704-STR-01.dwg - Layout
 Last Saved: Aug-08/22 12:22pm - Plotted: Aug-08/22

PROFESSIONAL SEAL															
No.	DATE	DESCRIPTION	DRAWN	CHK'D	DESIGN	CHK'D	APP'D	No.	DATE	DESCRIPTION	DRAWN	CHK'D	DESIGN	CHK'D	APP'D
		ISSUE / REVISIONS								ISSUE / REVISIONS					
								E	AUG08/22	ISSUED FOR TENDER	PP	PC	VB	-	DP
								D	JUL15/22	RE-ISSUED FOR PERMIT	PP	PC	VB	-	DP
								C	JUN30/22	ISSUED FOR PERMIT	PP	PC	VB	-	DP
								B	MAR25/22	ISSUED FOR CLIENT REVIEW	TH	PC	VB	-	DP
								A	NOV12/21	ISSUED FOR CLIENT REVIEW	RC	PC	PC	-	DP

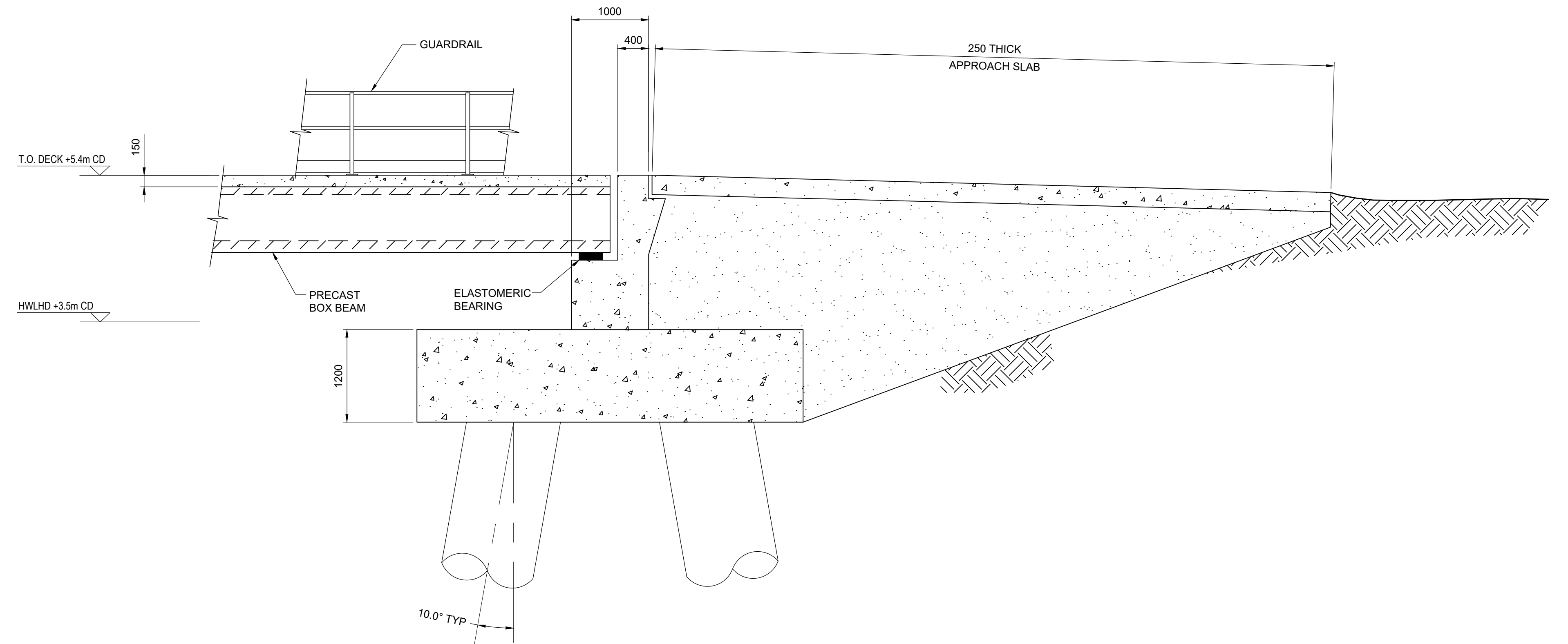


CONSULTANT			
TITLE			
CANOLA OIL TRANSLOAD FACILITY LOADING DECK GENERAL ARRANGEMENT			
DRAWING SCALE	PROJECT NUMBER	DRAWING NUMBER	REV.
1:300	7704	7704-STR-001	E

Filename: Z:\Jobs\A To H\DP World Canada\7704 - Canola Oil Study\9 Drawings\5 CAD\4 Struct\7704-STR-002.dwg - Layout
 Last Saved: Aug-08/22 10:42am Plotted: Aug-08/22



SECTION 2
SCALE: 1:40



DETAIL A
SCALE: 1:40

ISSUED FOR TENDER
 NOT FOR CONSTRUCTION

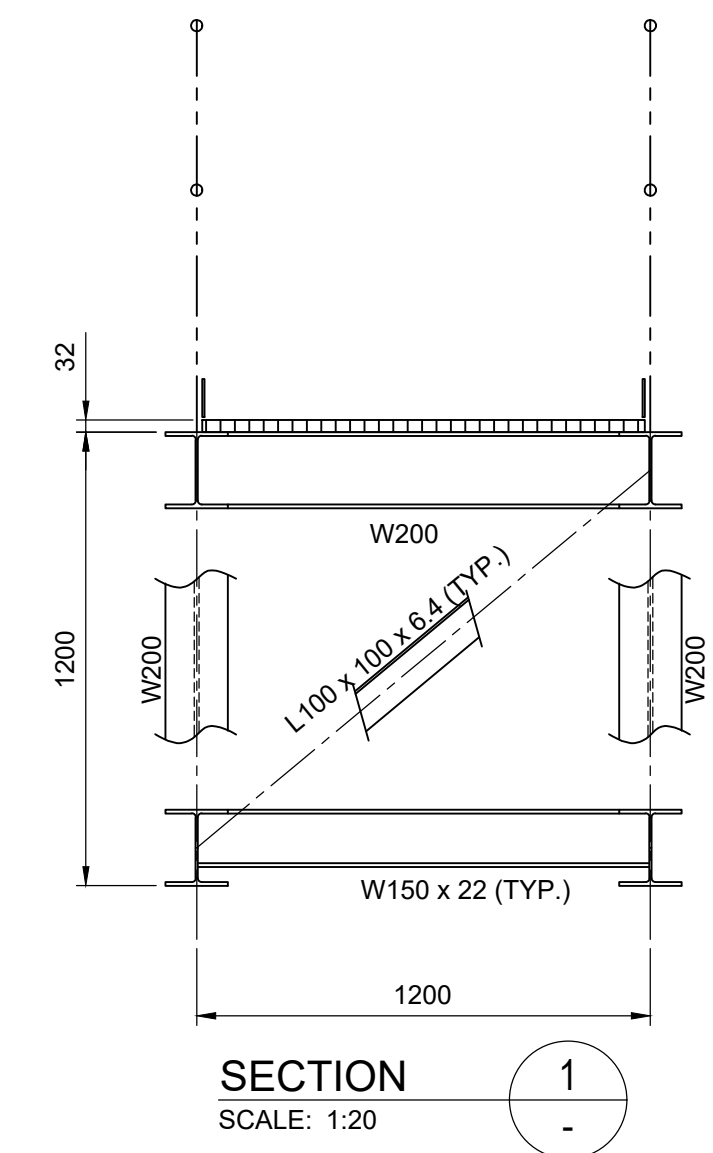
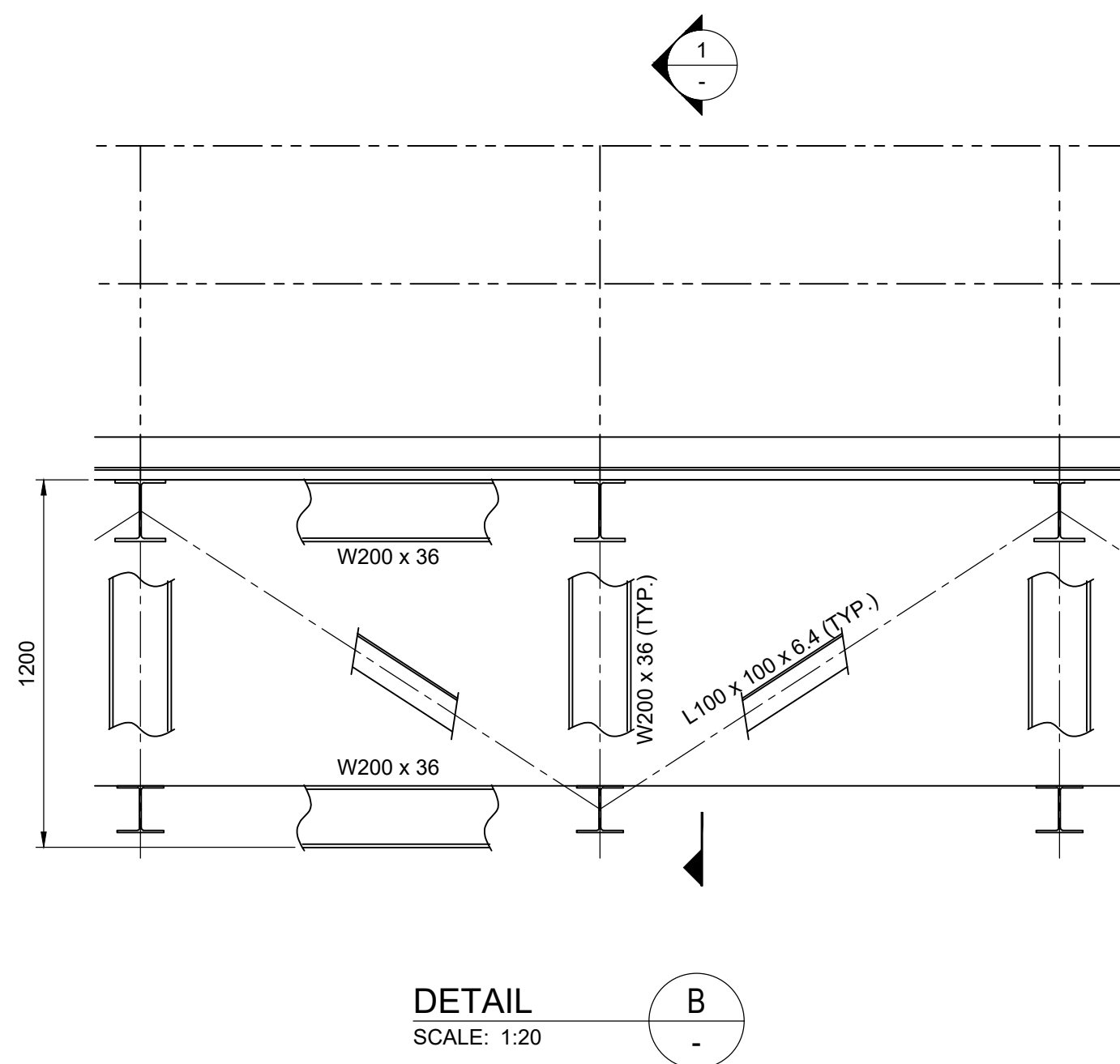
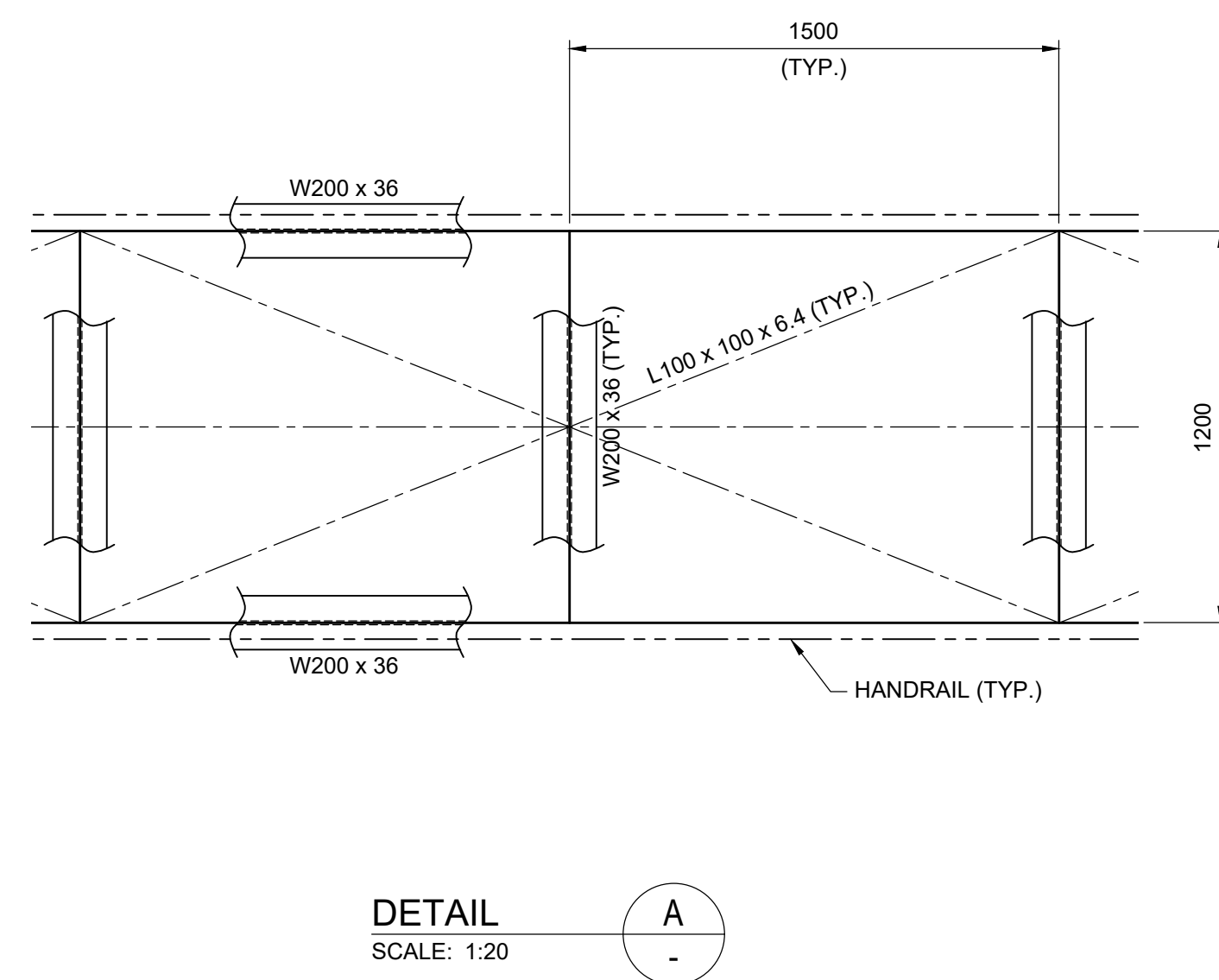
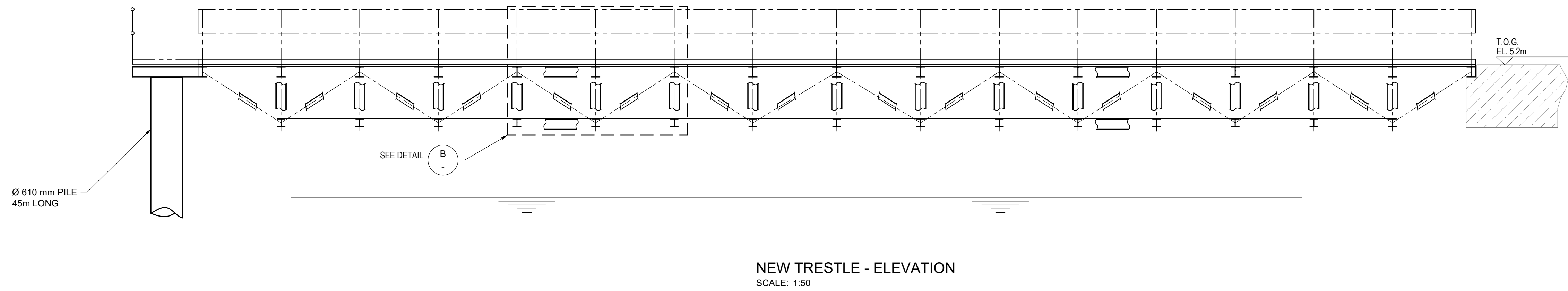
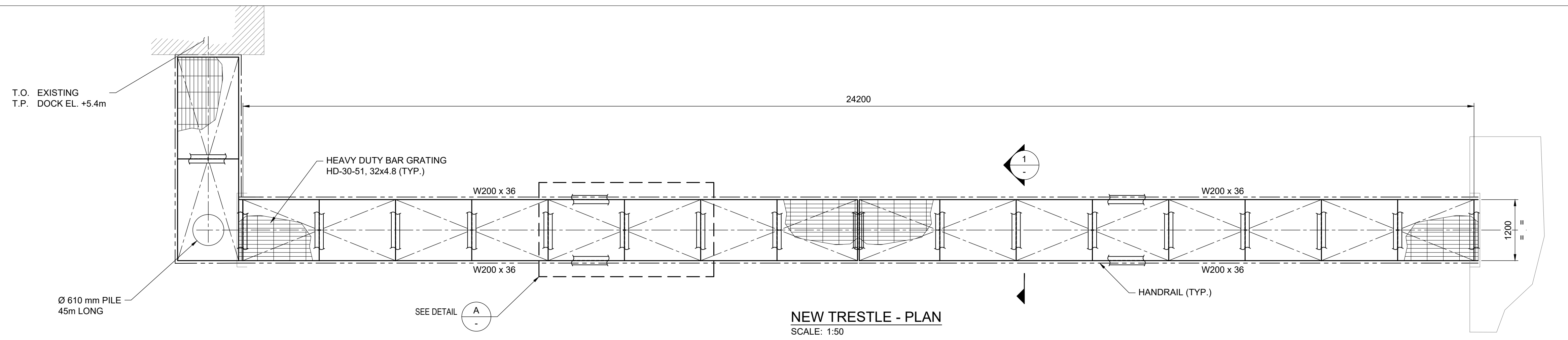
PROFESSIONAL SEAL

No.	DATE	DESCRIPTION	DRAWN	CHK'D	DESIGN	CHK'D	APP'D
ISSUE / REVISIONS							

H	AUG08/22	ISSUED FOR TENDER	PP	PC	PC	-	DP
G	JUN30/22	ISSUED FOR PERMIT	TM	PC	VB	-	DP
F	JUN03/22	ISSUED FOR CLIENT REVIEW	TM	PC	VB	-	DP
E	JUN02/22	ISSUED FOR CLIENT REVIEW	TM	PC	VB	-	DP
D	MAY31/22	ISSUED FOR CLIENT REVIEW	TM	PC	VB	-	DP
C	MAY27/22	ISSUED FOR CLIENT REVIEW	TM	PC	VB	-	DP
B	MAR25/22	ISSUED FOR CLIENT REVIEW	TH	PC	VB	-	DP
A	NOV12/21	ISSUED FOR CLIENT REVIEW	RC	PC	PC	-	DP
No.	DATE	DESCRIPTION	DRAWN	CHK'D	DESIGN	CHK'D	APP'D
ISSUE / REVISIONS							



CONSULTANT			
TITLE			
CANOLA OIL TRANSLOAD FACILITY TRESTLE SECTIONS & DETAILS			
DRAWING SCALE	PROJECT NUMBER	DRAWING NUMBER	REV.
NOTED	7704	7704-STR-002	H



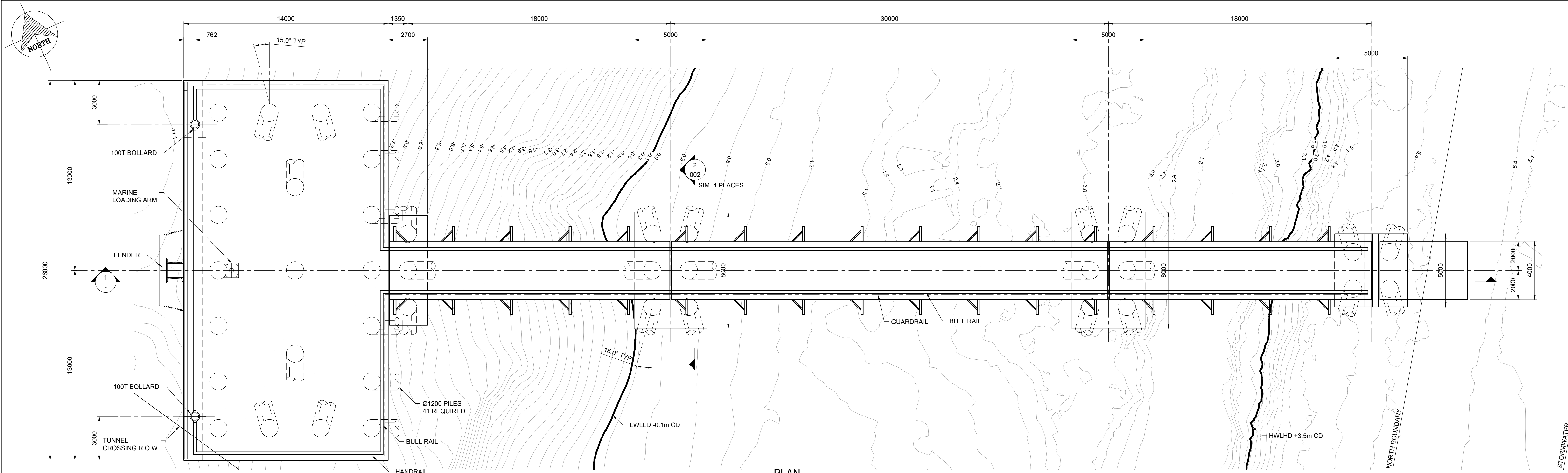
ISSUED FOR TENDER
NOT FOR CONSTRUCTION

File name: Z:\Jobs\A To H\DP World Canada\7704-STR-003.dwg - Layout
Last saved: Aug-08/22 12:30pm Plotted: Aug-08/22

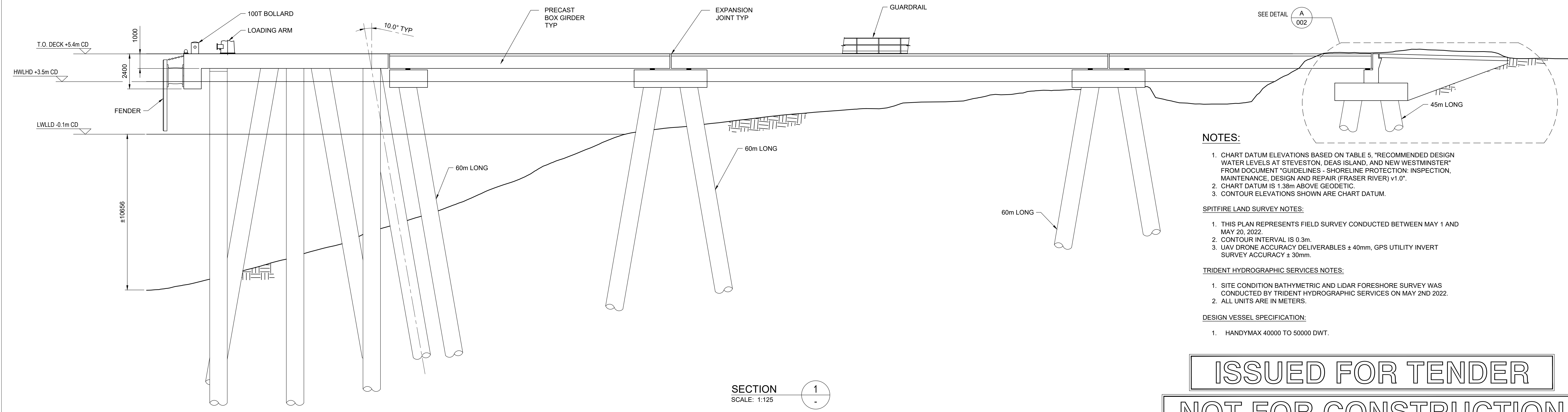
PROFESSIONAL SEAL																
No.	DATE	DESCRIPTION	DRAWN	CHK'D	DESIGN	CHK'D	APP'D	No.	DATE	DESCRIPTION	DRAWN	CHK'D	DESIGN	CHK'D	APP'D	
ISSUE / REVISIONS																
								D	AUG08/22	ISSUED FOR TENDER		PP	PC	PC	-	DP
								C	JUN30/22	ISSUED FOR PERMIT		PP	PC	PC	-	DP
								B	MAR25/22	ISSUED FOR CLIENT REVIEW		TH	PC	PC	-	DP
								A	NOV12/21	ISSUED FOR CLIENT REVIEW		RC	PC	PC	-	DP



CONSULTANT			
<small>TITLE</small> CANOLA OIL TRANSLOAD FACILITY NEW TRESTLE			
<small>DRAWING SCALE</small> NOTED	<small>PROJECT NUMBER</small> 7704	<small>DRAWING NUMBER</small> 7704-STR-003	<small>REV.</small> D



PLAN
SCALE: 1:125



SECTION
SCALE: 1:125

- NOTES:**
- CHART DATUM ELEVATIONS BASED ON TABLE 5, "RECOMMENDED DESIGN WATER LEVELS AT STEVESTON, DEAS ISLAND, AND NEW WESTMINSTER" FROM DOCUMENT "GUIDELINES - SHORELINE PROTECTION: INSPECTION, MAINTENANCE, DESIGN AND REPAIR (FRASER RIVER) v1.0".
 - CHART DATUM IS 1.38m ABOVE GEODETIC.
 - CONTOUR ELEVATIONS SHOWN ARE CHART DATUM.
- SPITFIRE LAND SURVEY NOTES:**
- THIS PLAN REPRESENTS FIELD SURVEY CONDUCTED BETWEEN MAY 1 AND MAY 20, 2022.
 - CONTOUR INTERVAL IS 0.3m.
 - UAV DRONE ACCURACY DELIVERABLES ± 40mm, GPS UTILITY INVERT SURVEY ACCURACY ± 30mm.
- TRIDENT HYDROGRAPHIC SERVICES NOTES:**
- SITE CONDITION BATHYMETRIC AND LIDAR FORESHORE SURVEY WAS CONDUCTED BY TRIDENT HYDROGRAPHIC SERVICES ON MAY 2ND 2022.
 - ALL UNITS ARE IN METERS.
- DESIGN VESSEL SPECIFICATION:**
- HANDYMAX 40000 TO 50000 DWT.

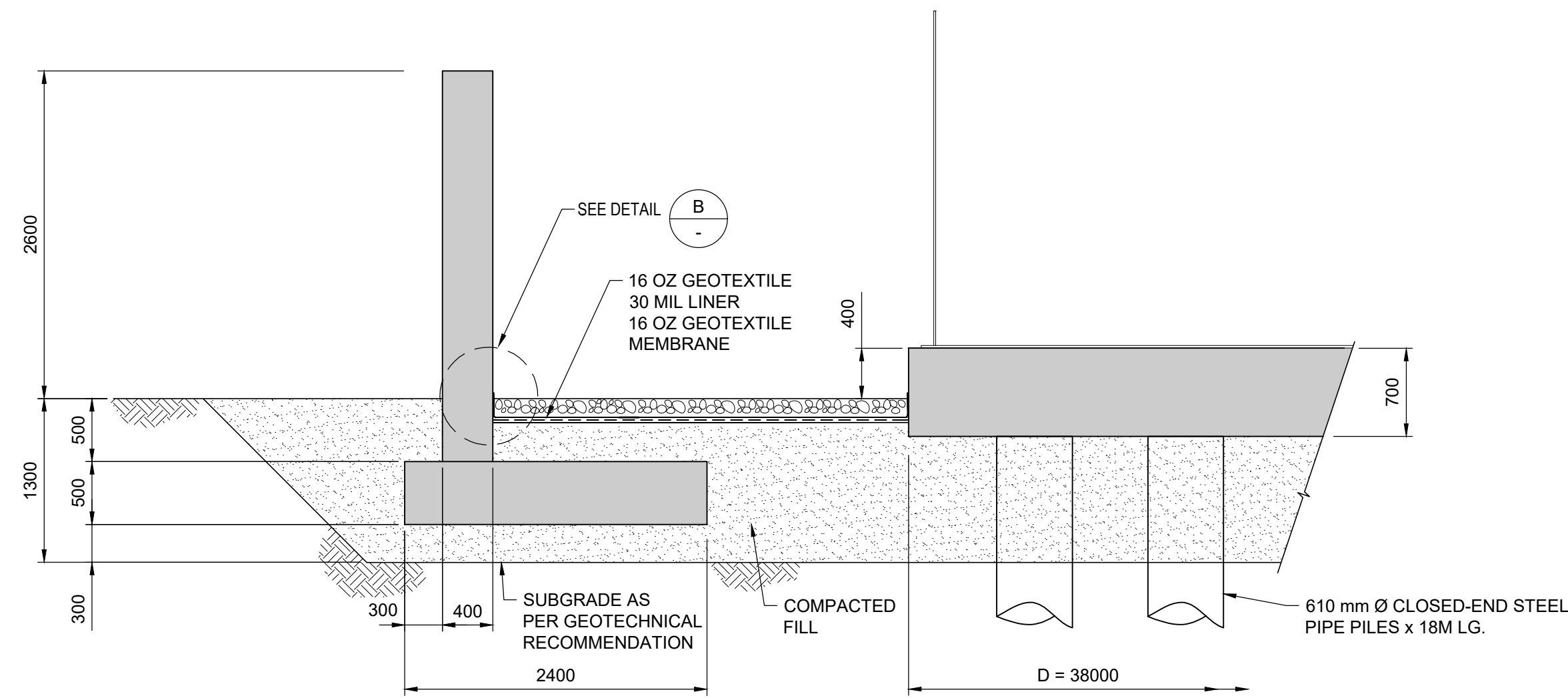
ISSUED FOR TENDER
NOT FOR CONSTRUCTION

File name: Z:\Jobs\A To H\DP-World_Canada\7704_Canola Oil Study\9 Drawings\5 CAD\4 Struct\7704-STR-004.dwg - 7704-STR-004
 Last Saved: Aug-08/22 12:22pm - Plotted: Aug-08/22

No.	DATE	DESCRIPTION ISSUE / REVISIONS	DRAWN	CHK'D	DESIGN	CHK'D	APP'D	No.	DATE	DESCRIPTION ISSUE / REVISIONS	DRAWN	CHK'D	DESIGN	CHK'D	APP'D
								J	AUG08/22	ISSUED FOR TENDER	PP	PC	PC	-	DP
								H	JUL15/22	RE-ISSUED FOR PERMIT	PP	PC	VB	-	DP
								G	JUN30/22	ISSUED FOR PERMIT	TM	PC	VB	-	DP
								F	JUN03/22	ISSUED FOR CLIENT REVIEW	TM	PC	VB	-	DP
								E	JUN02/22	ISSUED FOR CLIENT REVIEW	TM	PC	VB	-	DP
								D	MAY31/22	ISSUED FOR CLIENT REVIEW	TM	PC	VB	-	DP
								C	MAY27/22	ISSUED FOR CLIENT REVIEW	TM	PC	VB	-	DP
								B	MAR25/22	ISSUED FOR CLIENT REVIEW	TH	PC	VB	-	DP
								A	NOV12/21	ISSUED FOR CLIENT REVIEW	RC	PC	PC	-	DP

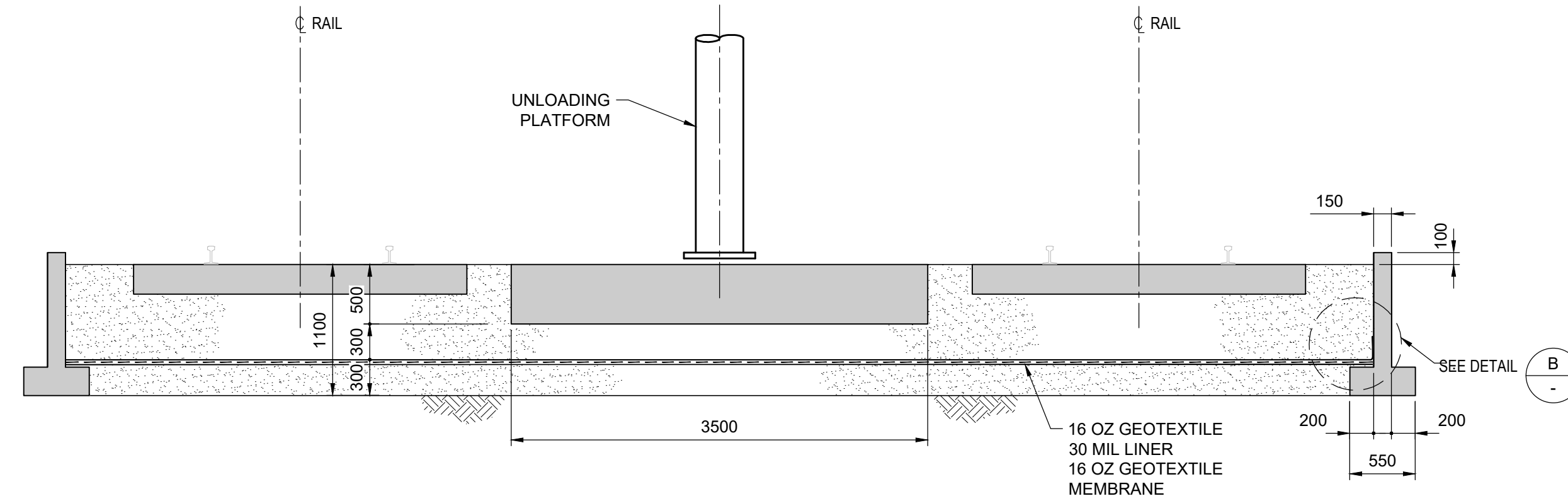


CONSULTANT			
TITLE			
CANOLA OIL TRANSLOAD FACILITY NEW LOADING ARM DECK AND TRESTLE			
DRAWING SCALE	PROJECT NUMBER	DRAWING NUMBER	REV.
NOTED	7704	7704-STR-004	J



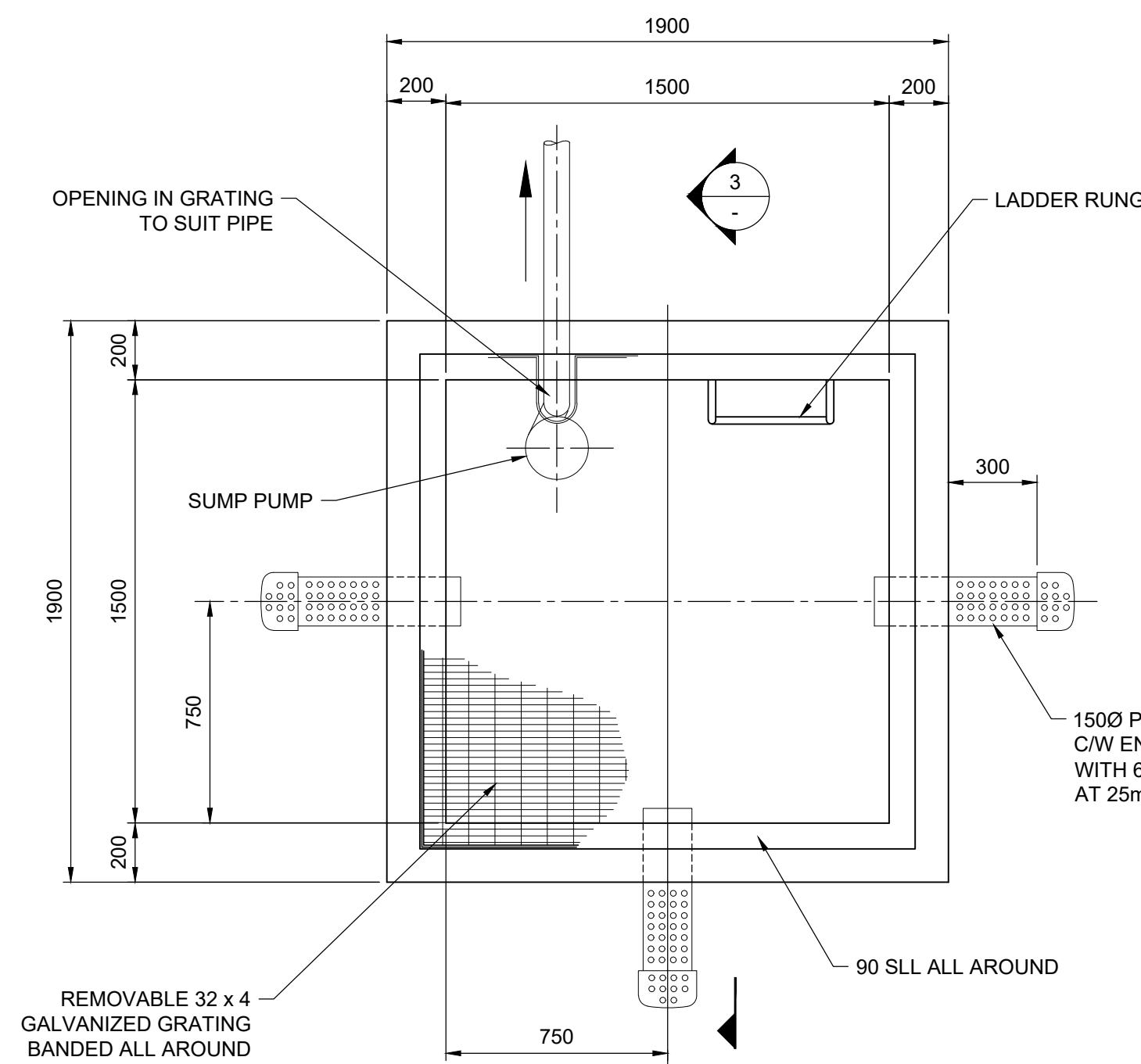
SECONDARY CONTAINMENT

SECTION 1
SCALE: 1:40
GA-001



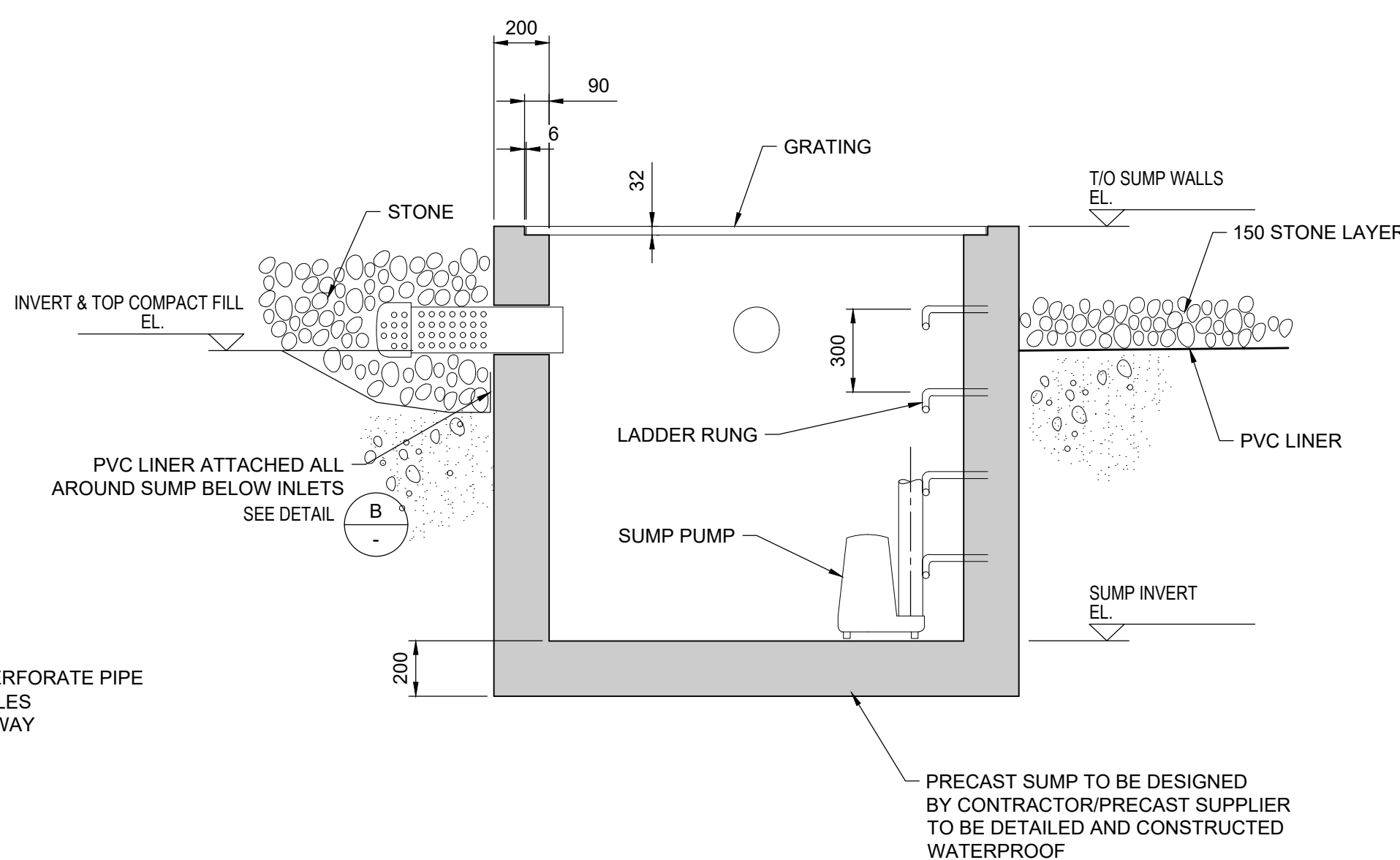
RAIL CONTAINMENT

SECTION 2
SCALE: 1:40
GA-001

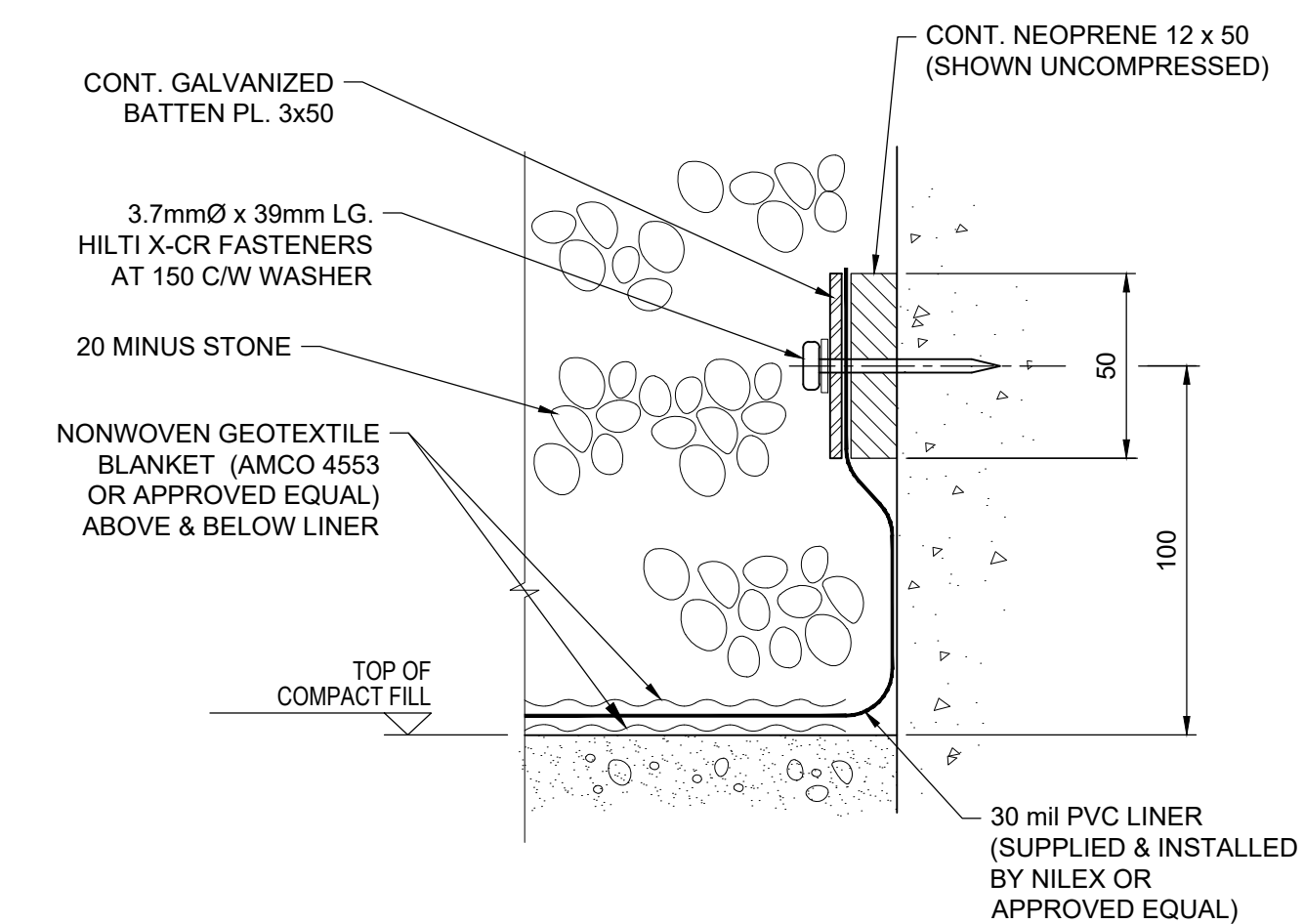


SUMP - PLAN

DETAIL A
SCALE: 1:20
GA-001



SECTION 3
SCALE: 1:40



DETAIL B
SCALE: 1:2

TYPICAL LINER AT CONTAINMENT WALL, FOOTINGS & CONCRETE SUMP

ISSUED FOR TENDER

NOT FOR CONSTRUCTION

No.	DATE	DESCRIPTION	ISSUE / REVISIONS	DRAWN	CHK'D	DESIGN	CHK'D	APP'D	No.	DATE	DESCRIPTION	ISSUE / REVISIONS	DRAWN	CHK'D	DESIGN	CHK'D	APP'D

PROFESSIONAL SEAL

TITLE
 CANOLA OIL TRANSLOAD FACILITY
 STRUCTURAL DETAILS
 SHEET 1

DRAWING SCALE	PROJECT NUMBER	DRAWING NUMBER	REV.
NOTED	7704	7704-STR-005	D