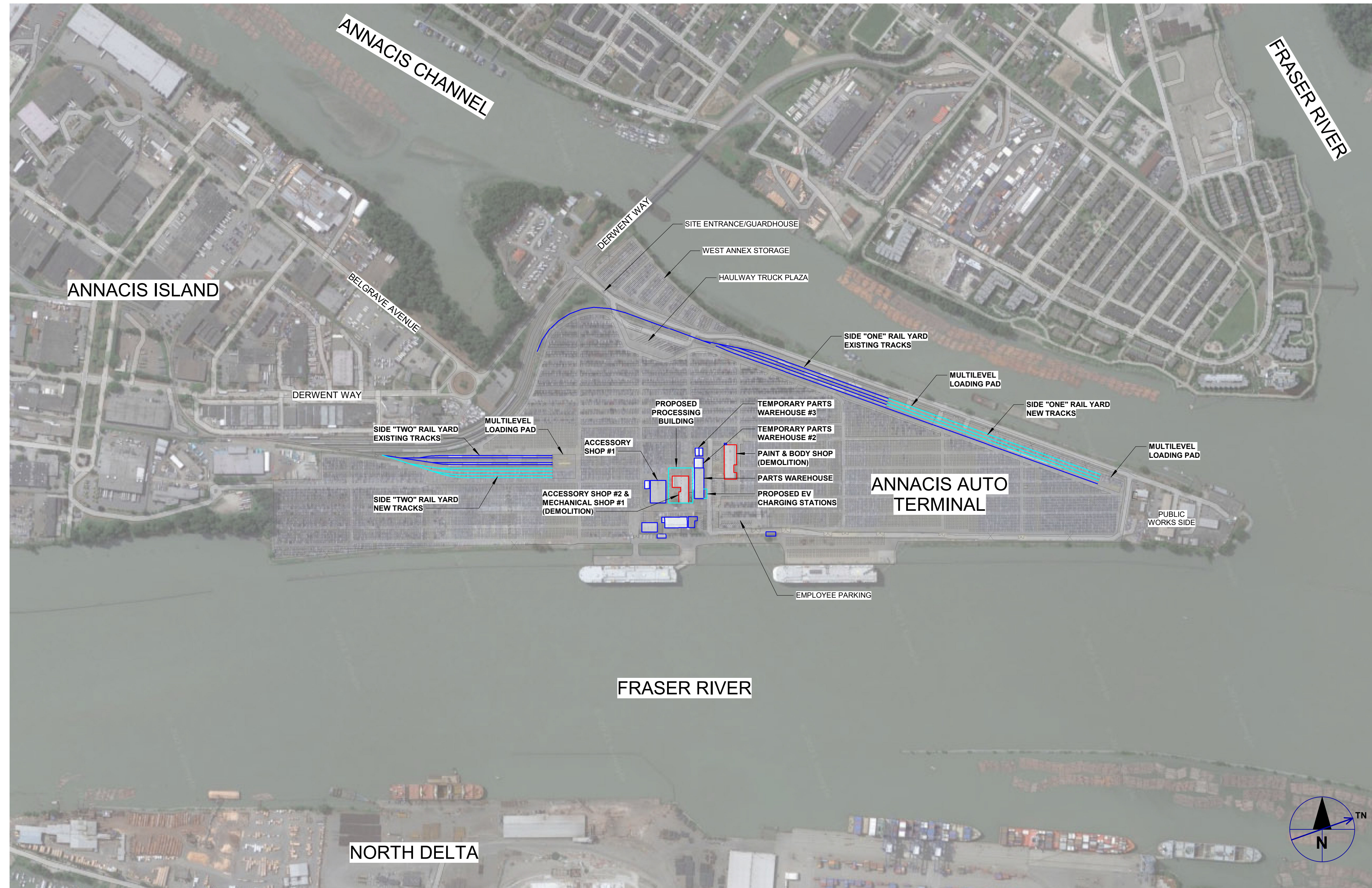


# ANNACIS AUTO TERMINAL OPTIMIZATION PROJECT

VANCOUVER FRASER PORT AUTHORITY (VFPA)  
WALLENIUS WILHELMSSEN VEHICLE SERVICES (WWS)



NOTE: These electronic files are intended for your use and information only and are not intended as official documents issued by AECOM. The recipient user bears the responsibility to check these files against the corresponding signed and sealed drawings and specifications. Because data transferred by computer disks or email can be altered, either intentionally or unintentionally, by transcription, machine error, environmental factors, or the operator, the recipient shall indemnify, defend, hold harmless, and hold AECOM harmless from all claims, liabilities, damages, losses, and costs, including but not limited to, costs of defense arising out of changes or modifications to the data in the electronic media form. Once transmitted, AECOM has no control over the use or application of these files, and assumes no responsibility for their accuracy or completeness, or any changes made to them, or for subsequent use on other projects.

**LEGEND**

- EXISTING
- DEMOLITION
- NEW CONSTRUCTION/ EXPANSION

THIS DRAWING TO BE PRINTED IN COLOR

## 1 SITE PLAN

G-000 REF: A-105 SCALE: 1 : 5000

5/10/2022 11:45:51 AM BIM 360//BP-AWIER (CAN) 60661425-Annacis Auto Terminal Optimization Project/60661425-ANNACIS AUTO TERMINAL\_A21.rvt

No.	Date	REVISION	NM	ST
			Drh	Chd
A	2021-10-27	FINAL SUBMISSION ISSUED FOR PDR		

**PRELIMINARY**

DO NOT USE FOR CONSTRUCTION

LEAD CONSULTANT

DESIGN BY	ST
DRAWN BY	NM
APPROVED	TH
DATE	2021-10-27
SCALE	As indicated
PMV SITE	365-039
SIZE DWG.	D

**ANNACIS AUTO TERMINAL**

SITE PLAN

365-039- G-000

SHEET	REV.
-------	------