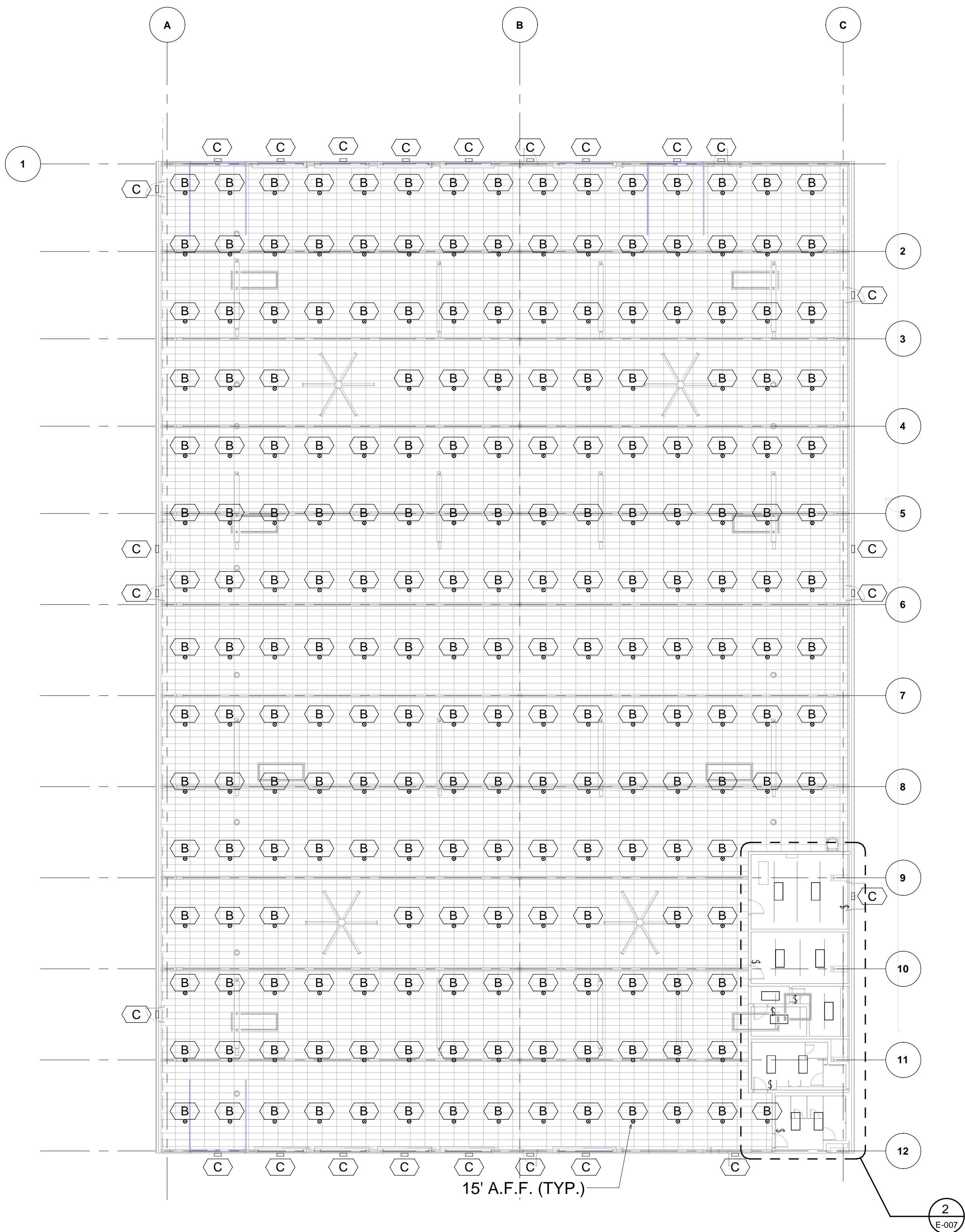
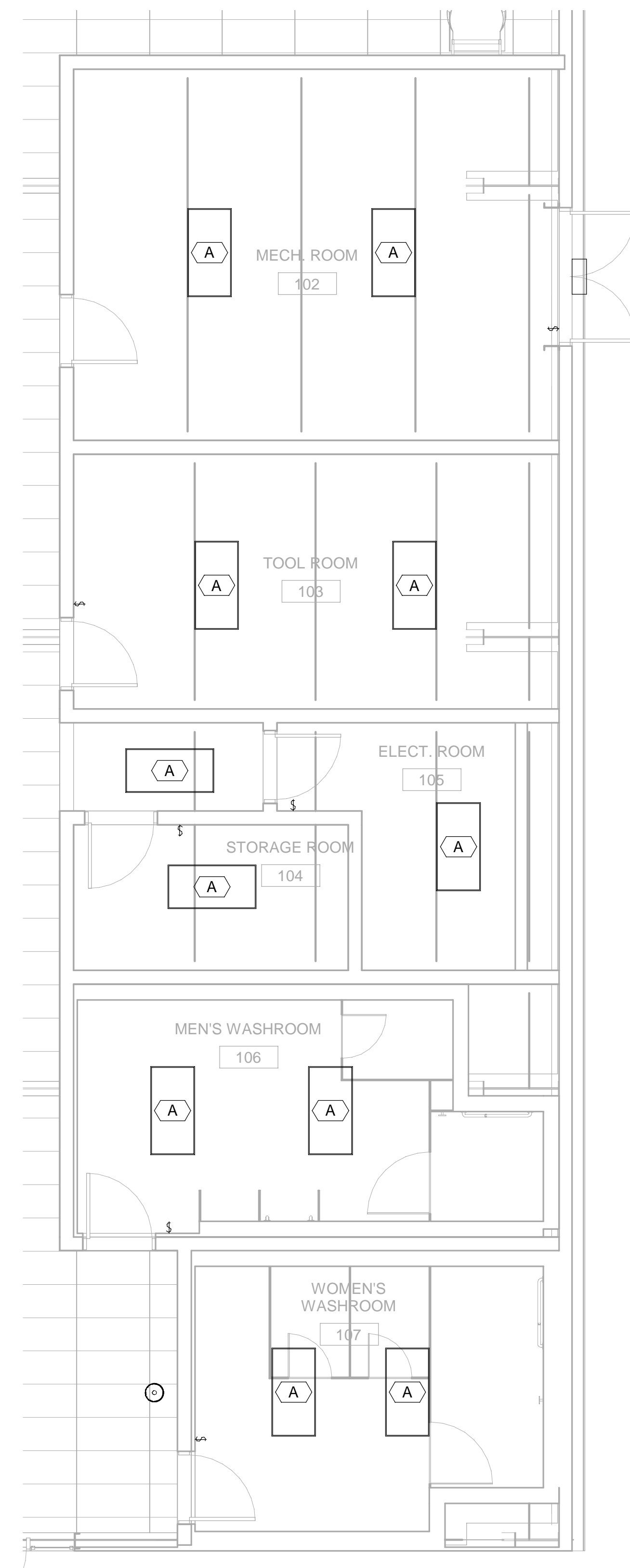


2022-01-11 9:37:37 PM
BIM 360/JP-AMER (CAN) 60661425-Annacis Auto Terminal Optimization Project/60661425-ANNACIS AUTO TERMINAL_E21.rvt

THIS DRAWING HAS BEEN PREPARED FOR THE USE OF AECOM'S CLIENT AND MAY NOT BE USED, REPRODUCED OR RELIED UPON BY THIRD PARTIES, EXCEPT AS AGREED BY AECOM AND ITS CLIENT, AS REQUIRED BY LAW OR FOR USE BY GOVERNMENTAL REVIEWING AGENCIES. AECOM ACCEPTS NO RESPONSIBILITY, AND DENIES ANY LIABILITY WHATSOEVER, TO ANY PARTY THAT MODIFIES THIS DRAWING WITHOUT AECOM'S EXPRESS WRITTEN CONSENT. DO NOT SCALE THIS DOCUMENT. ALL MEASUREMENTS MUST BE OBTAINED FROM STATED DIMENSIONS.



1 ELECTRICAL CEILING PLAN
1 : 200



2 ELECTRICAL CEILING PLAN ENLARGED
1 : 50

No.	Date	REVISION	Dr'n	Ch'd
B	2021-10-27	FINAL SUBMISSION FOR PDR	SN	IG
A	2021-09-21	DRAFT FINAL SUBMISSION ISSUED FOR REVIEW	SN	IG

PRELIMINARY

DO NOT USE FOR
CONSTRUCTION

LEAD CONSULTANT

DESIGN BY	IG
DRAWN BY	SN
APPROVED	TH
DATE	2021-10-27
SCALE	As indicated
PMV SITE	365-039

ANNACIS AUTO TERMINAL LIGHTING PLAN		SHEET	REV
SIZE	DWG.	365-039- E-007	